

THE CITY ISLAND YACHT

TROUPER

Designed by John H. Wells Built by Robert Jacob, City Island
At 106' the largest American built yacht in 1939



During the building of TROUPER, 1939

JUTT's sister, some age in the yard of Eugene Jacob, Inc., on City Island, one of the largest and finest yachting facilities in the world, was recently awarded a C. A. Tite of Chicago. Mr. Tite is president of the Diamond T. Motor Car Company, and his new yacht, *Tramont*, will fly the burgee of the Chicago Yacht Club. Actually, this is the largest steel yacht built and finished in this country this year.

Tranger is a beautifully designed work from the hand of John H. Wills, Inc., New York novel publishers. Much thought has been put into making her a fine, nice, able novel, but to someone who has been hunting for the latest Liane knows, she analyzed and means him to completely get rough water when the word starts to float the *Breakfast* water.

The new line is also compact. Amalgams has the air of supercharged Gasser-Bennett which will pump Tronox at a steady rate past. This is the first application of supercharged diatom power in a vessel of the size and type of Tronox, and developments are particularly interesting because of the power combination. The vessel cannot be regarded as a light weight craft, one, due to the line and the application of supercharged power, still more speed possibilities have been observed.

Tanager has an overall length of 530 mm (21 inches), maximum length of 554 mm (21 3/4 inches), wings 181 mm, and a depth of 5 feet 9 inches. This summer has been quite mild so at Hauling Beach in the southern part of Malibu and here the weather will take him in. Flying for the winter. It is not his intention to fly around and all accommodations were planned from his own specific ideas in order to keep his personal requirements.

This is the 334th cycle of approximately the same size and type named in the Wells. One of them was the (Sharon) Lane M IV, a 23-mile line. Another, Green-Martin's Glimmer, is a Western disconformity and the oldest covered 112 mi. Caroline has a somewhat younger span of 58 km. India, a 138-km and older track.

Below: Tanager, named after jolly bird, the mascot is a tanager. She was designed by John H. Webb, Inc., No. 2, N. W. of Chicago.

TROUPER

A DISTINGUISHED DIESEL YACHT

is also equipped with Warner Drivels, and has a cruising speed of 15 1/2 knots.

the 1990s, the number of people in the world who are illiterate has increased from 400 million to 600 million. The number of illiterate people in the world is expected to reach 700 million by the year 2000. The number of illiterate people in the world is expected to reach 800 million by the year 2010. The number of illiterate people in the world is expected to reach 900 million by the year 2020. The number of illiterate people in the world is expected to reach 1 billion by the year 2030. The number of illiterate people in the world is expected to reach 1.1 billion by the year 2040. The number of illiterate people in the world is expected to reach 1.2 billion by the year 2050. The number of illiterate people in the world is expected to reach 1.3 billion by the year 2060. The number of illiterate people in the world is expected to reach 1.4 billion by the year 2070. The number of illiterate people in the world is expected to reach 1.5 billion by the year 2080. The number of illiterate people in the world is expected to reach 1.6 billion by the year 2090. The number of illiterate people in the world is expected to reach 1.7 billion by the year 2100.

The bull is double-planted, the inner stem being a layer of young cedar under an outside skin of genuine Mexican mahogany. All bolts are square dressed and T-bolt brass nail fastenings are used throughout. A steel shear stake inside the full length of the alg under the wood plating, and brass diagonal strapping is present between the frames and plating for added nail strength. Aluminum pins have been used throughout in a primary case.

There are also mud waterways (bushes, after built roads and parking being of Walsdorf, which has long and permanently throughout the construction. The water-paved macadam showed a fading increasing from 10 to 200 m. on the road surface, and in 1940, has been noticed in the construction of both similar and unusual road, most of all because of the superstructure. A further indication of this accident is found in the Survey of the along side and bridge, which is of type Walsdorf, in each block.

Colony colonies, of which there are about 100 in all.



ON JUNE 18, 1940, the magnificent 107' Diesel yacht slipped down the ways at the yard of Robert Jacob, Inc. She was built for Mr. C. A. Tilt of the Chicago Yacht Club from designs by John H. Wells.

Although the prominent name now flowers in pure design and innovation, the "TRUCKER" employs an odd tale that has been the favorite subject for local writers the world over. For, since 1845, John Brown has been the revolutionary driver of many machines, buildings and women for sailing and his furnishings were high through, single-ton and cottonous resistance were strictly universal.

A popular companion to Volvo's Boxer Shifting, 4 Temples® Shifting. This reliable Anasimide Meryl is recommended for high speed and heavy duty work. It combines light strength and toughness with unusual resistance to shock. Make sure your boat is equipped with just the right one.



Five pull-back (flexible) joints
2.5-ton bumper-absorb the force from
sudden turns and strengthen
the tow bar

© 2000 Blackwell Science Ltd
Journal of Internal Medicine 247: 391–397



Anaconda Copper & Brass

THE AMERICAN BRASS COMPANY, General Offices: Waterbury, Connecticut
In Canada: American Brass Ltd., New Toronto, Ont. - Subsidiary of Anaconda Copper Mining Company

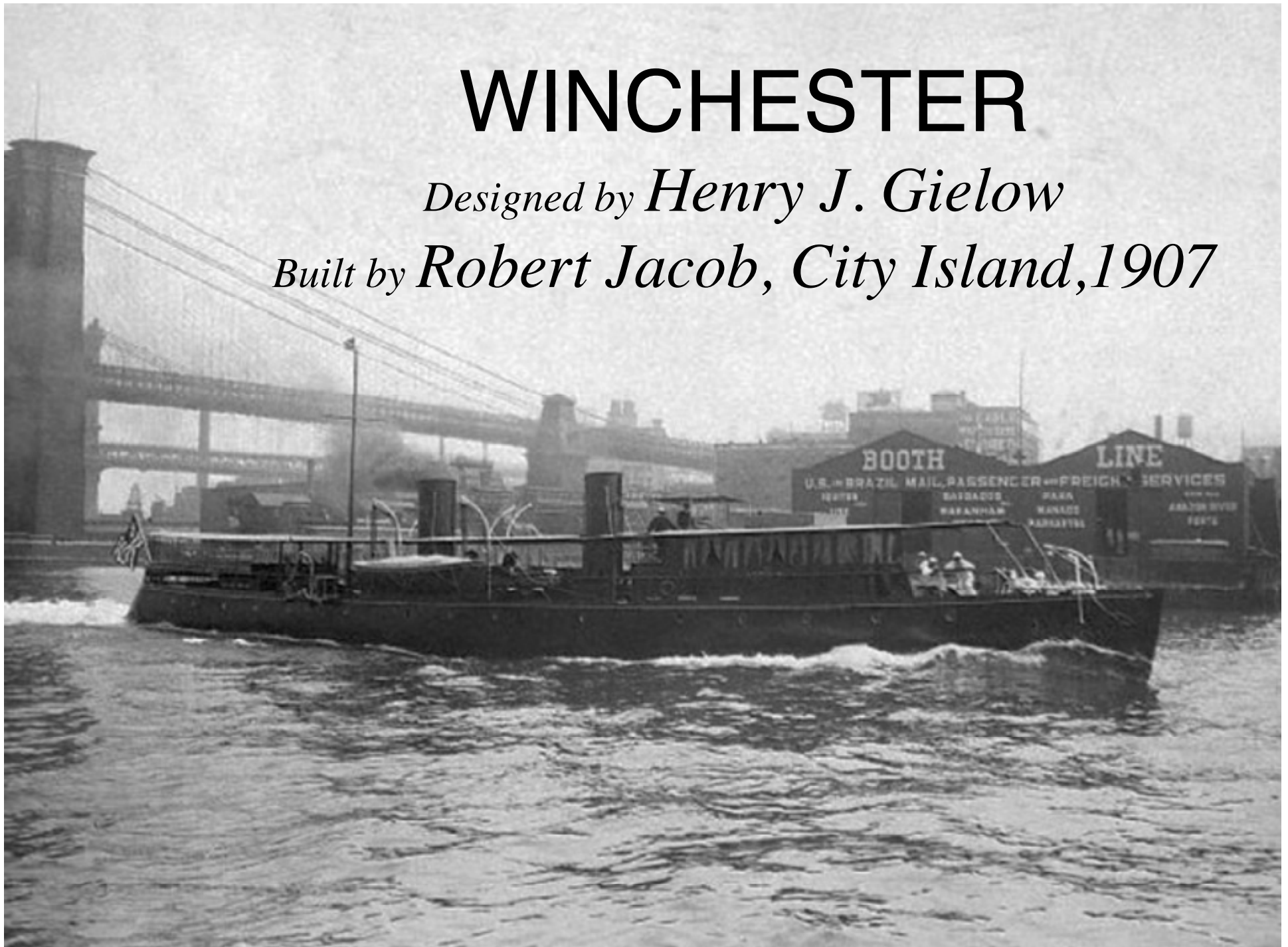
● 2009年10月1日

298

WINCHESTER

Designed by Henry J. Gielow

Built by Robert Jacob, City Island, 1907



M i r a M a r

Designed by Henry J. Gielow
Built by Kyle & Purdy, City Island, 1922
Owner: Louis Eisenlohr, Philadelphia, Pa.





MIRAMAR

The 100' Houseboat styled yacht while being well built and luxuriously furnished was unlucky from the start. Shortly after her launching and during commissioning, owner Louis Eisenlohr while overseeing the yacht receive custom furniture at Port Jefferson, died suddenly from heart failure. Several years later and when under new ownership the yacht was lost with all hands and without a trace in the Bermuda Triangle. Of note this type yacht with the large side ports was not intended for offshore cruising in heavy seas and may have played a large part in its demise.



A n a l g r a

Designed by Charles D. Mower and built by Henry B. Nevins, 1930

Analgra was at 120' the largest yacht built by the Nevins yard.

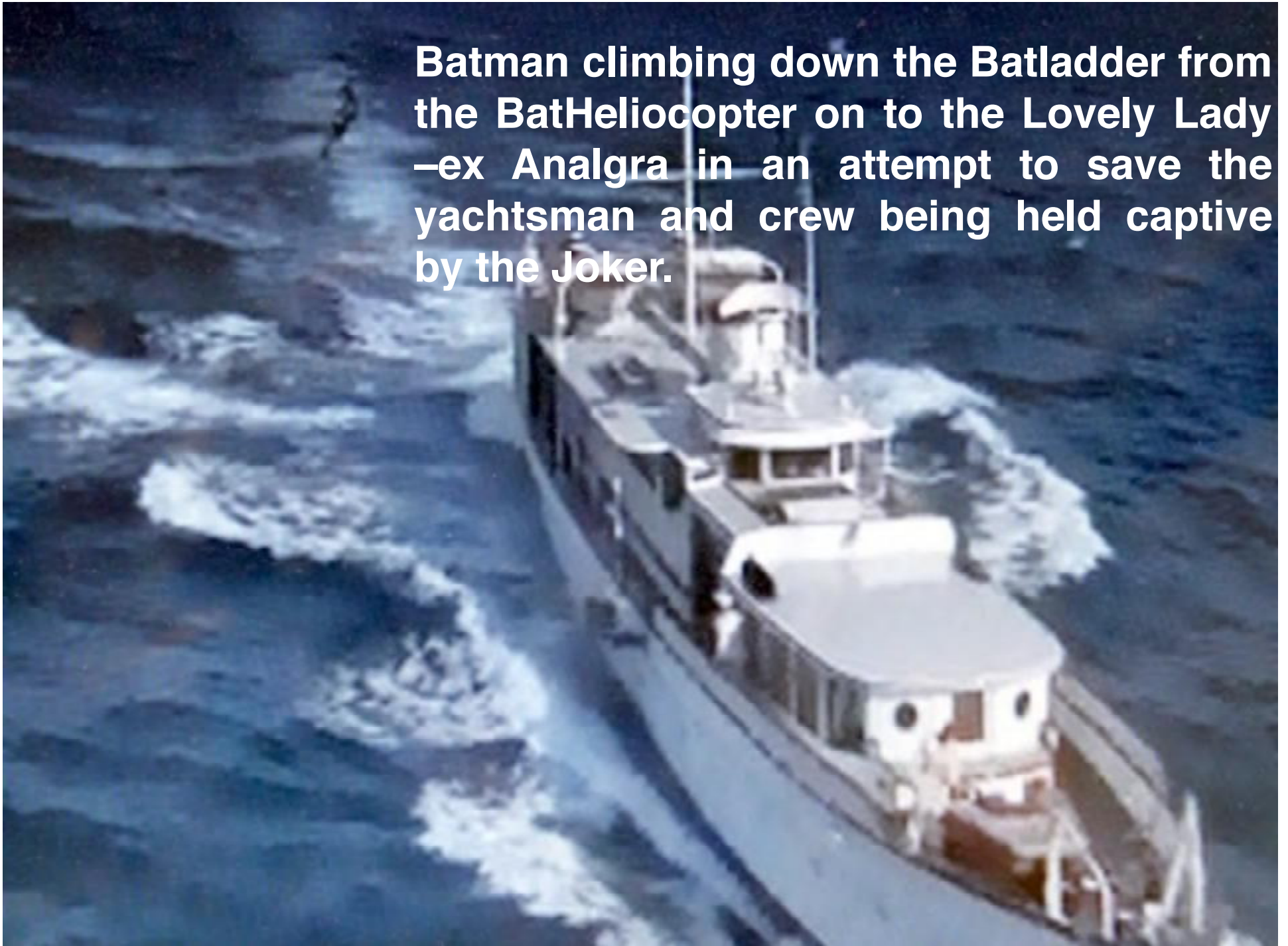
*Built for Lewis E. Pierson, President and C.E.O. of Irving Trust
and President of the United States Chamber of Commerce.*

*Analgra was later known as Tara when owned by another
Nevins regular customer E. Townsend Irvin of New York*



During the early 1950's Analgra was in the hands of Gen. Douglas McArthur while he was CEO at Remington Rand. Over the years the yacht was prominent on the west coast appearing in several films including "Some like it Hot" (in fact Marilyn Monroe used the yacht as quarters during filming), "Tequila Sunrise" with Mel Gibson, Kurt Russell, Michele Pfeiffer, and Raul Julia; and was also featured in the Batman movie and T.V. show.

Batman climbing down the Batladder from the BatHeliocopter on to the Lovely Lady –ex Analgra in an attempt to save the yachtsman and crew being held captive by the Joker.





Batman attempting to board the
Lovely Lady, ex- Analgra



A N A L G R A

Designed by Charles D. Mower Built by Henry B. Nevins, 1930

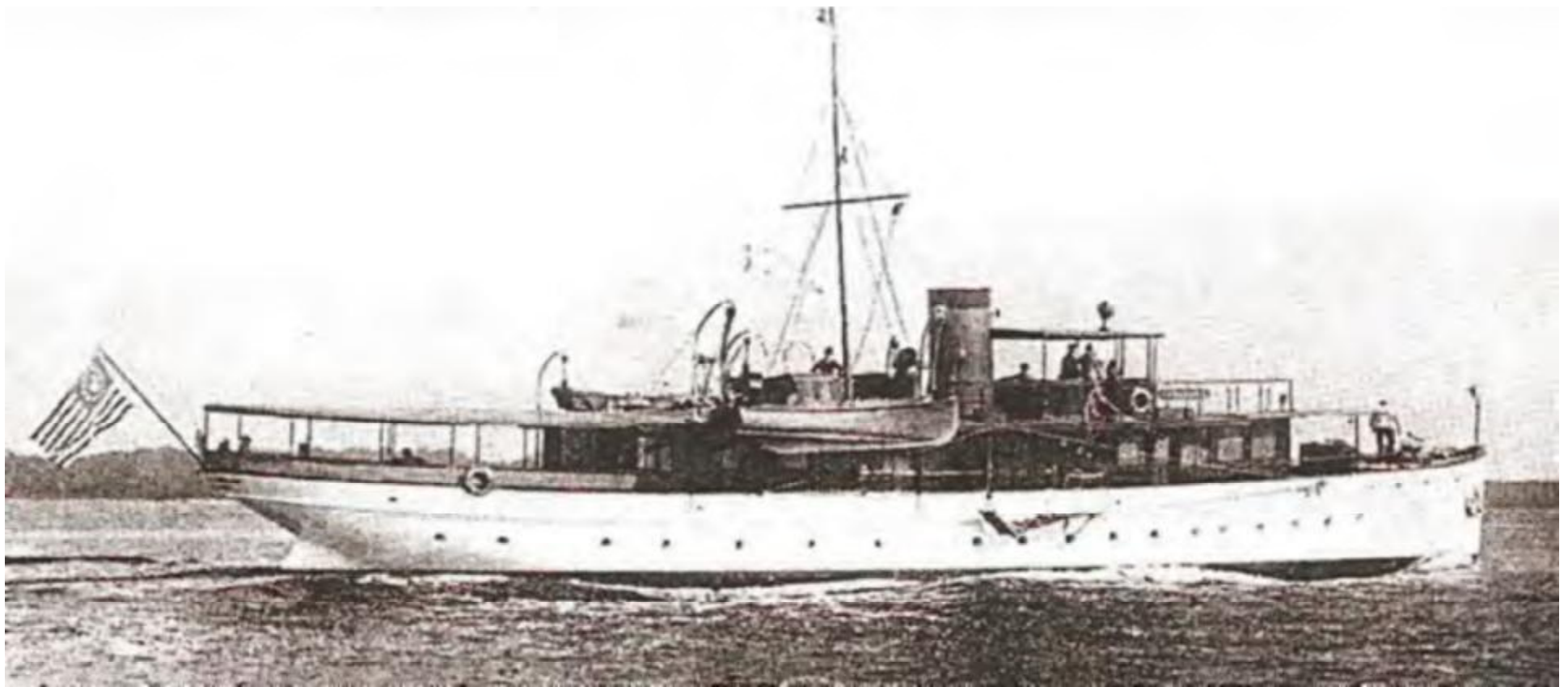
Owner: Lewis Pierson, New York

Cost to build Analgra : \$250,000.00 in 1930

Unfortunately after having a fortune invested in extensive rebuilding of the Analgra the Yacht Yard where it was being serviced went bankrupt, and vandals sunk the yacht at her birth. In spite of major attempts to raise the yacht and continue the restoration the U.S. Coast Guard felt it was too much of an obstruction and had it demolished.



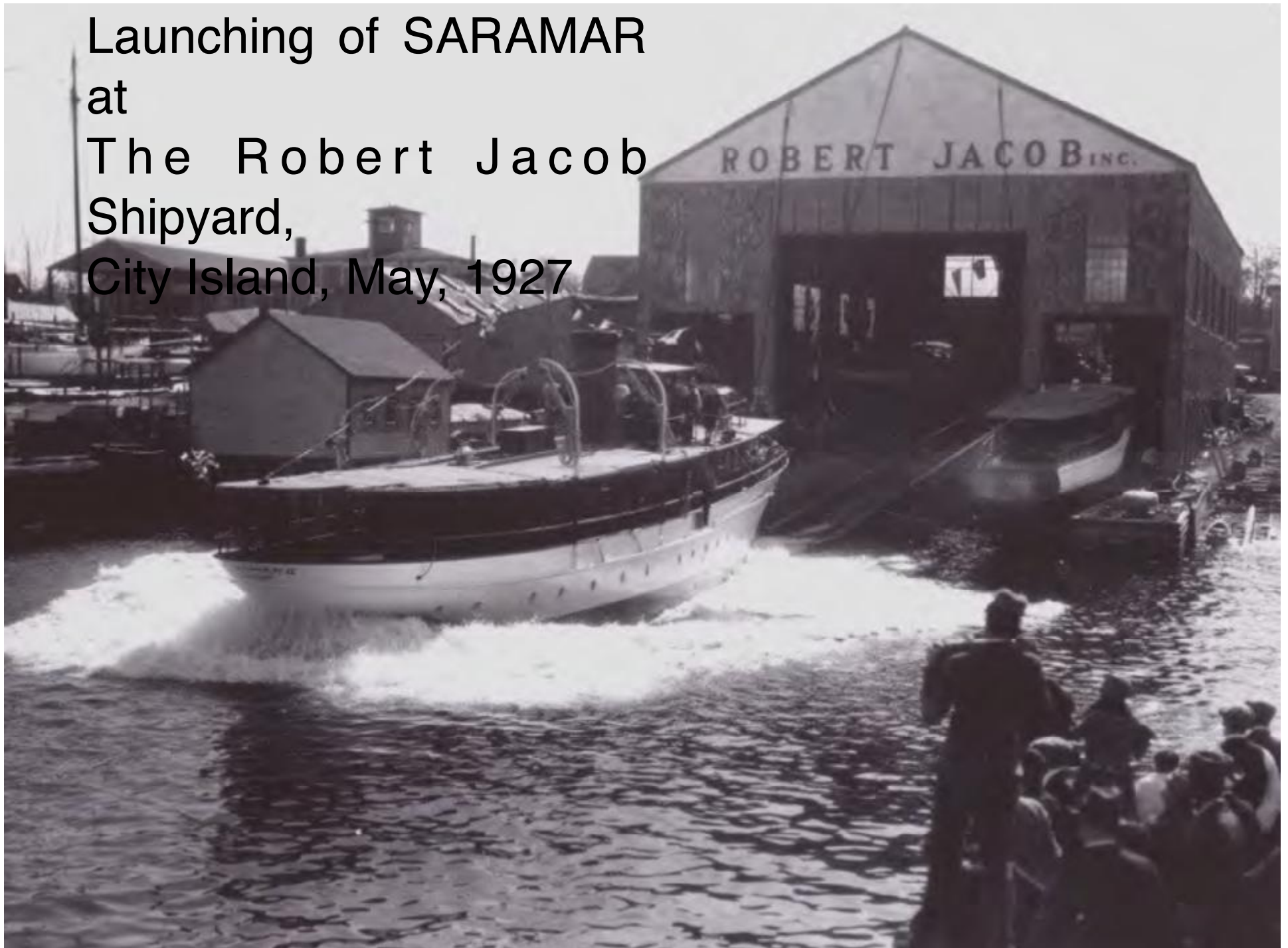
ANALGRA sunk at Miami in

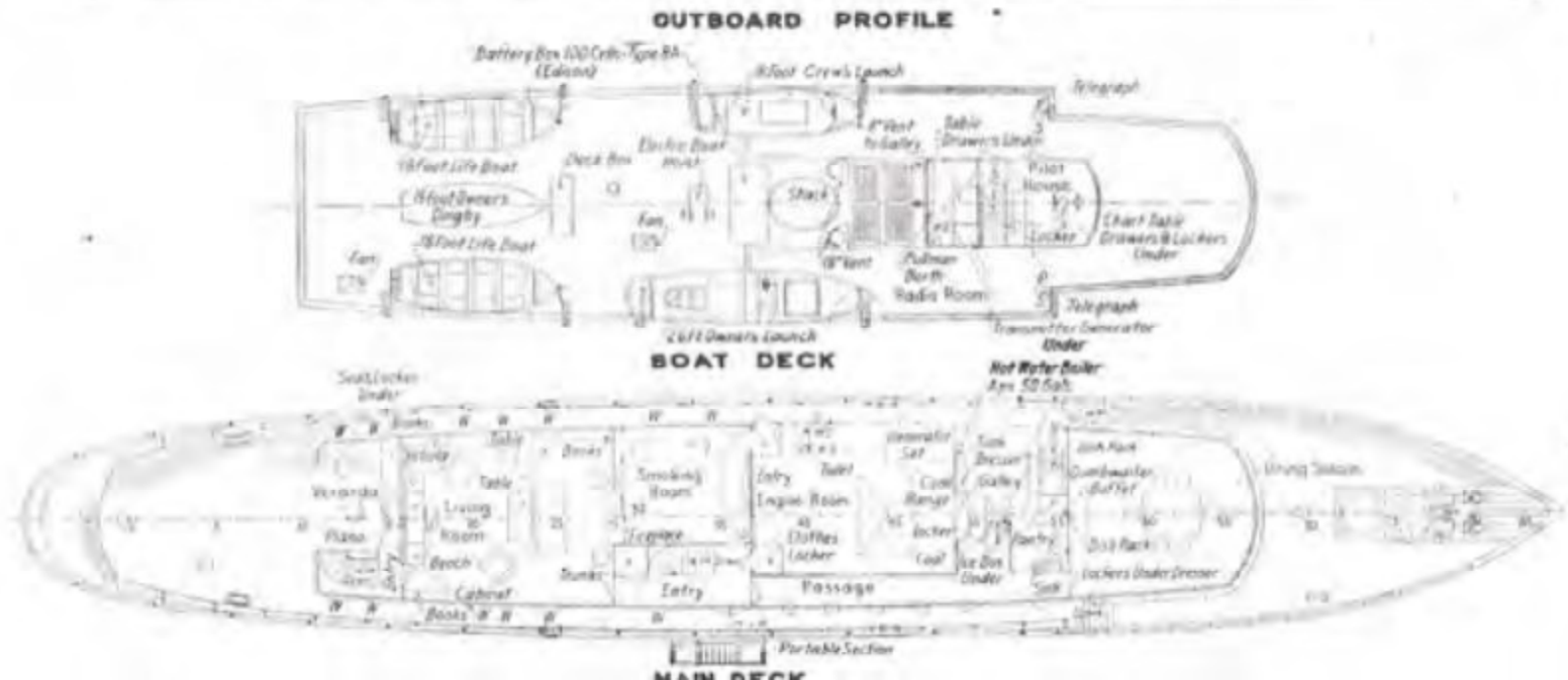
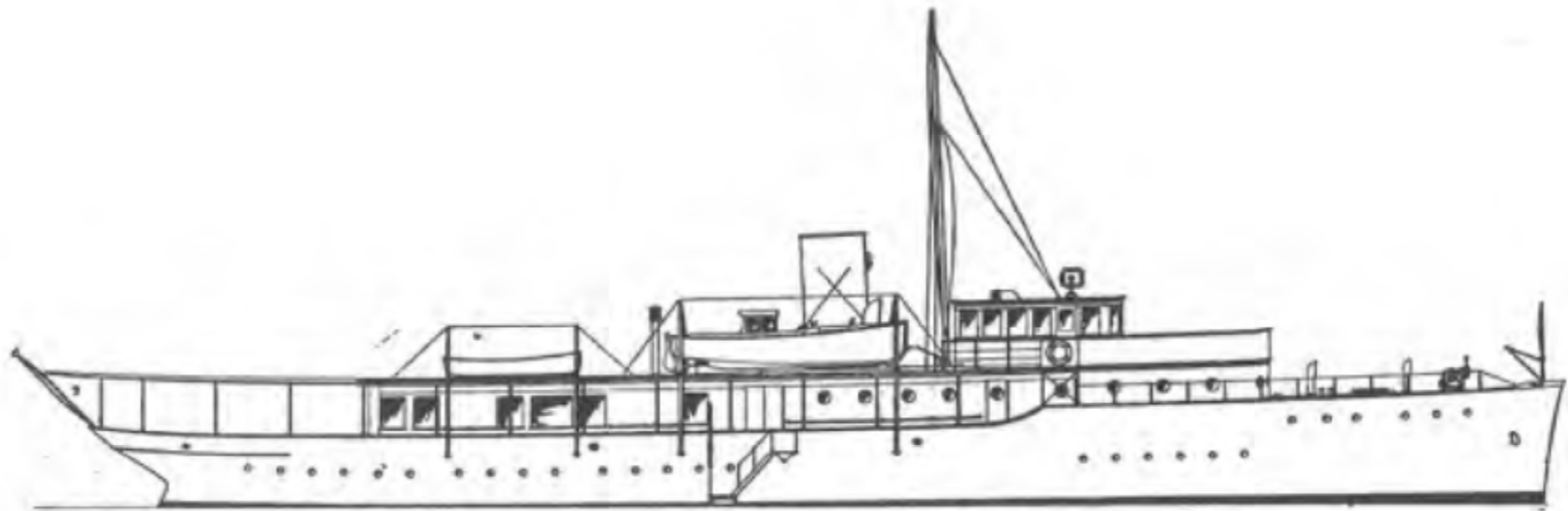


SARAMAR

The 107' yacht designed by John H. Wells and built by Robert Jacob in 1927 for Charles F. Fisher of General Motors. The following year brothers Lawrence P., and William A. Fisher had identical 107' yachts – Lura M. IV , and Margaret F III also built by the Robert Jacob Yard.

Launching of SARAMAR
at
The Robert Jacob
Shipyard,
City Island, May, 1927



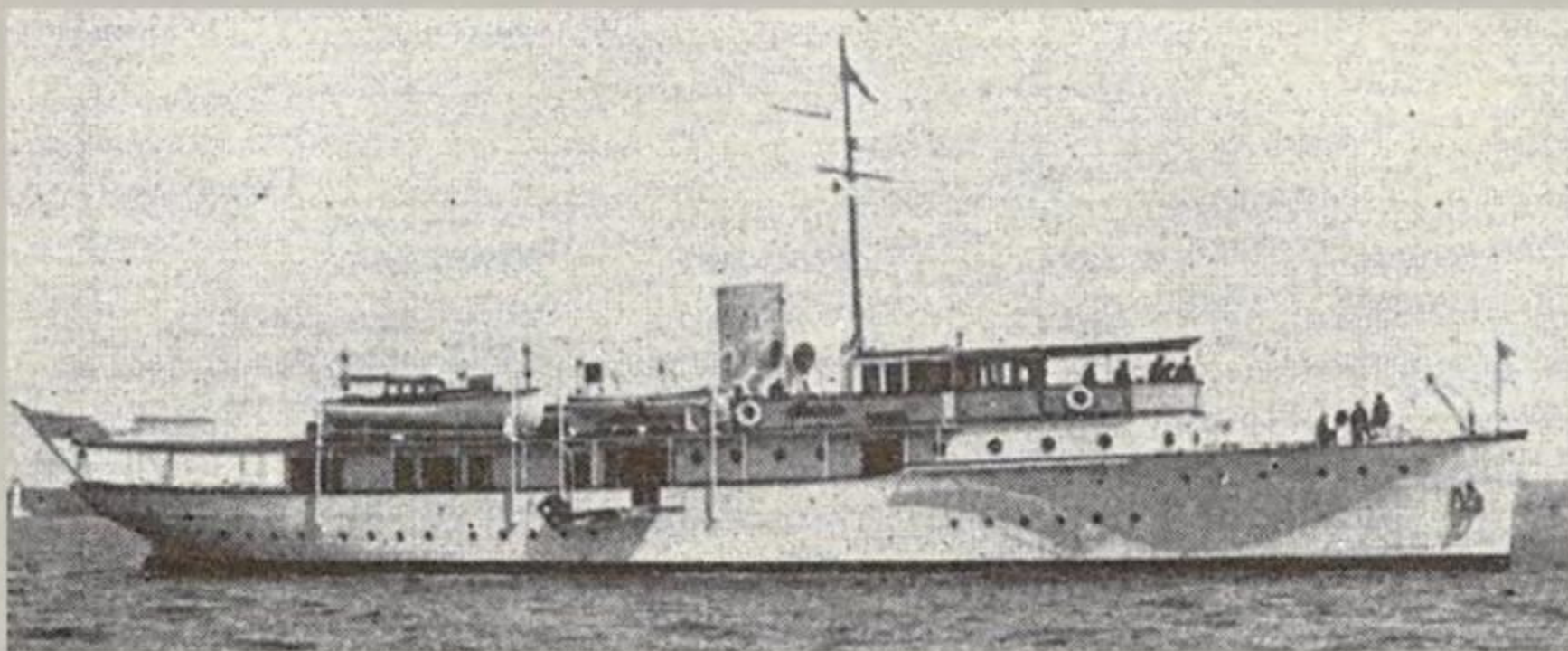


NOURMAHAL - Lines



ELECTRON

Built in 1956 by Nevins, the 82' Electron was designed by Sparkman and Stephens for David Sarnoff of RCA as a test yacht for the latest in electronic gear. Electron included Radar, Loran, Color RCA T.V., Hi-Fi, Central Air Conditioning, Heating, and Gyro Stabilizers.....all novel features at that time



Vincent Astor's 160' diesel yacht

NOURMAHAL

Designed by Cox & Stevens

Built by Robert Jacob. City Island, 1920



R A N G E R

Designed by Henry J. Gielow

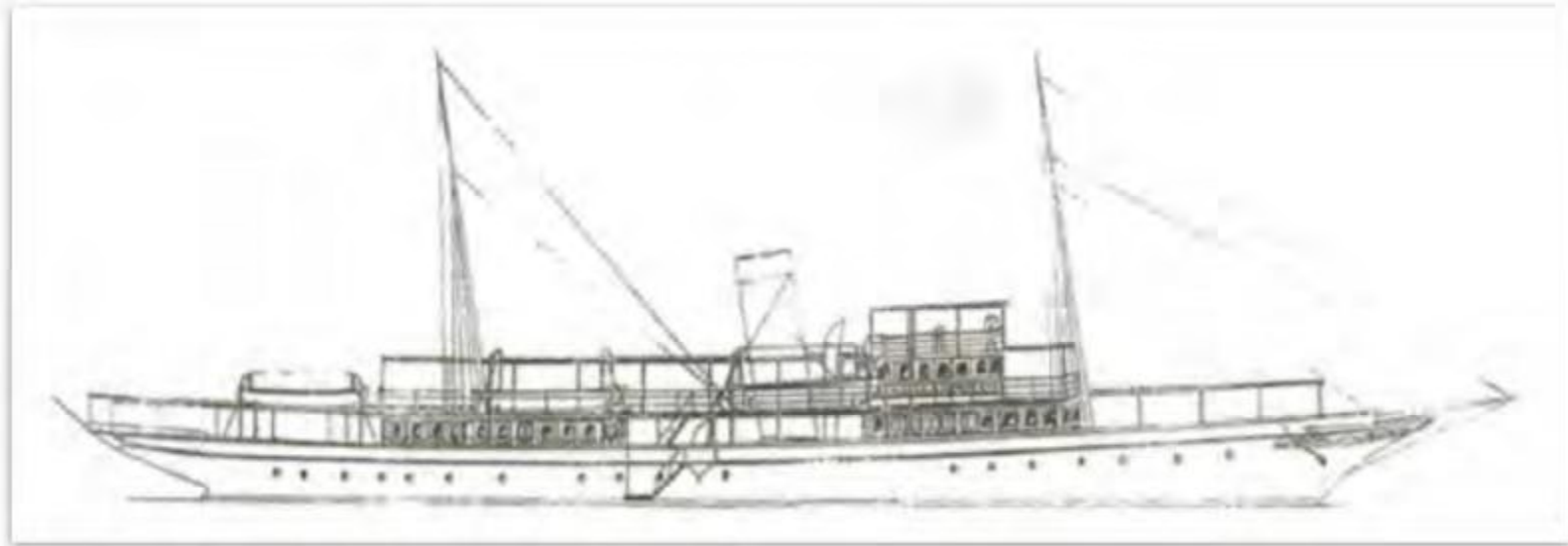
Built by Robert Jacob, City Island, 1910

Owned by Thomas Slocum, New York



CAROLINE

187'8" L.O.A.
The longest yacht
built at City Island.
Prior to launching at
the Robert Jacob
Shipyard, City
Island,
1914

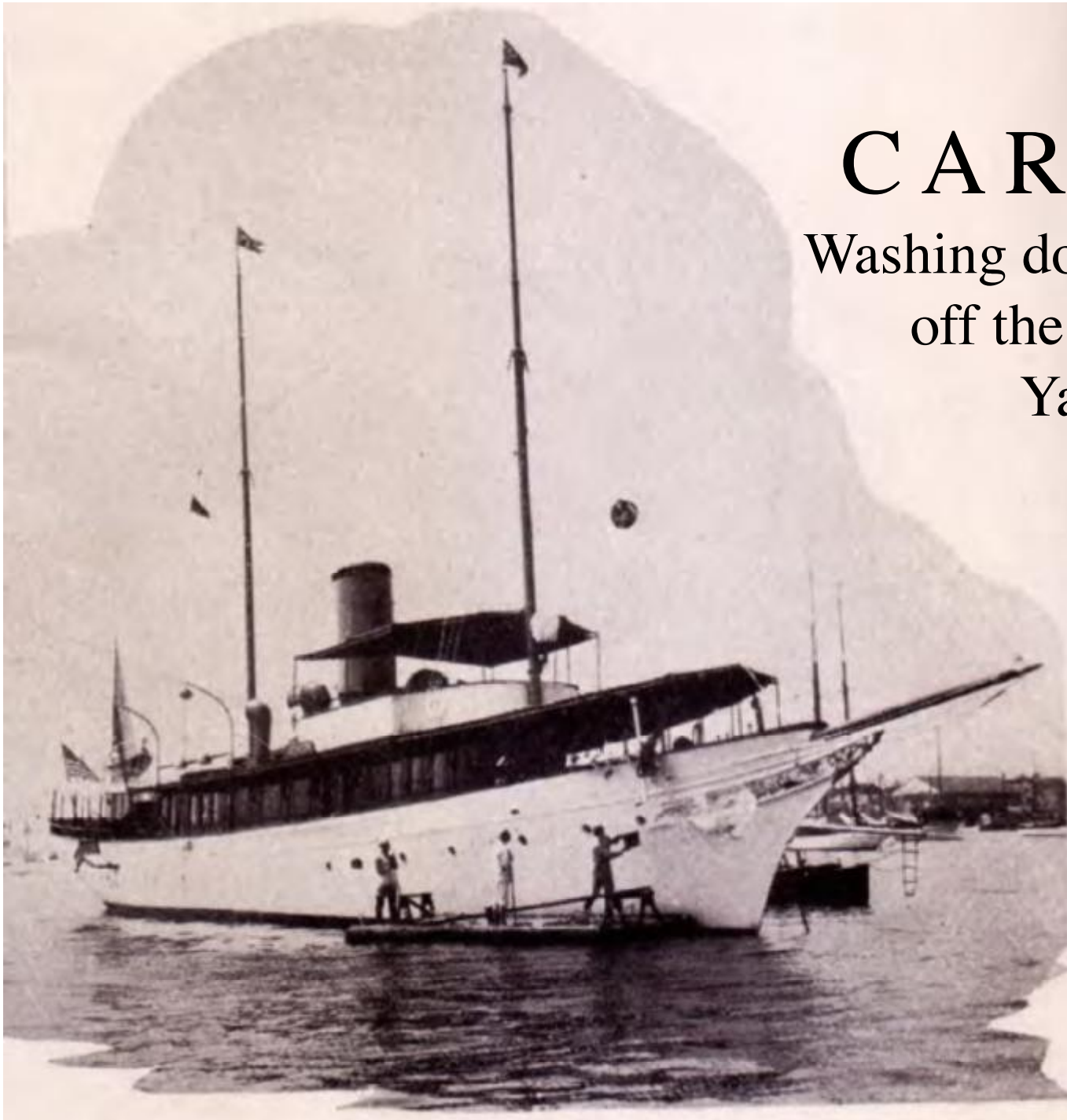


C A R O L I N E

the 187'8" steam yacht designed by William Gardner and built by Robert Jacob, City Island in 1914 for Edward Ford of Toledo, Ohio. The yacht spent most of it's life on the Great Lakes under the names of Delphine and then Stellaris. Came back east in the 1940's to join the fleet of Circle Line excursion yachts in New York but was put on active duty as a U.S. Navy patrol yacht during World War II. Later served as a passenger ferry in Greece before being taken off all registers in the 1980's.

CAROLINE

Washing down the new yacht
off the Robert Jacob
Yard, 1914





CAROLINE

Designed by William Gardner

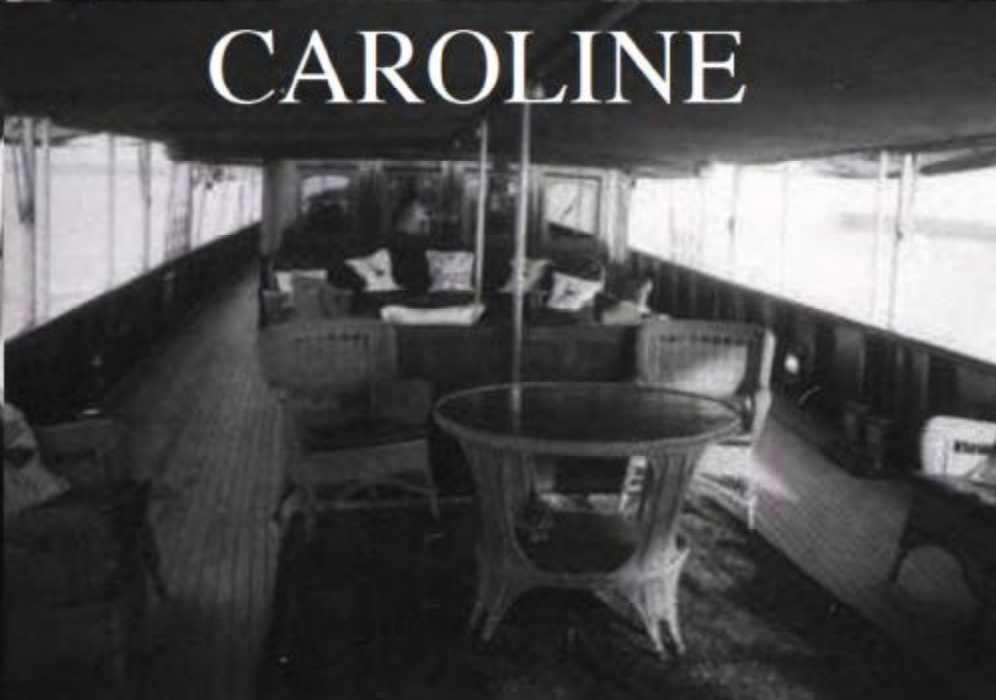
Built by Robert Jacob, City Island, 1914

At 187'8" L.O.A., The longest yacht
built at City Island



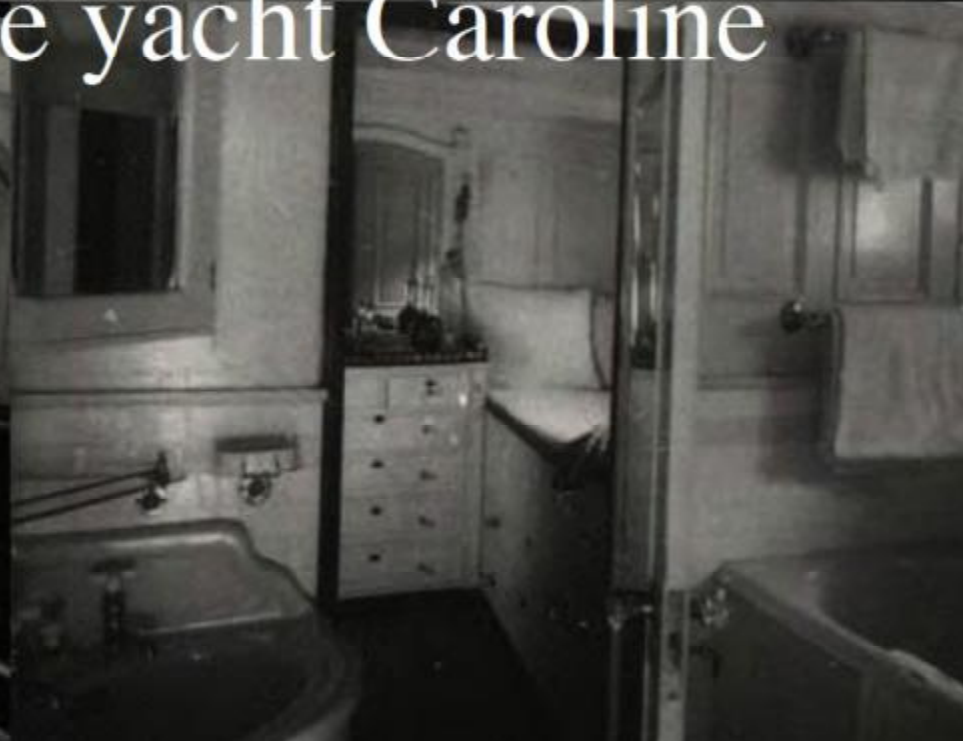
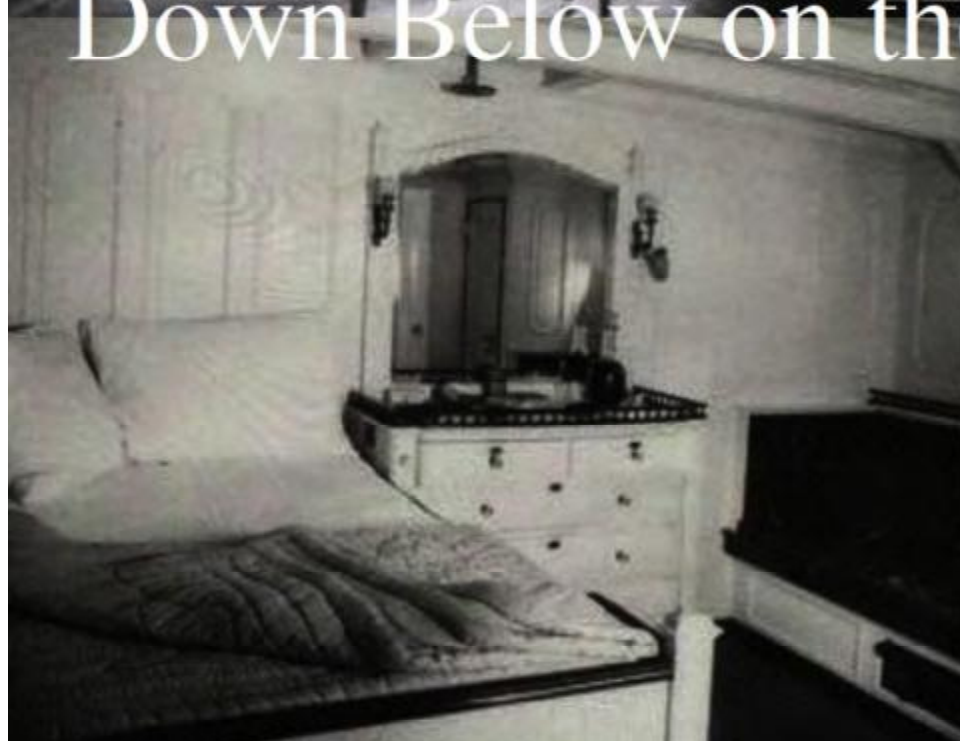
On board the steam yacht

CAROLINE



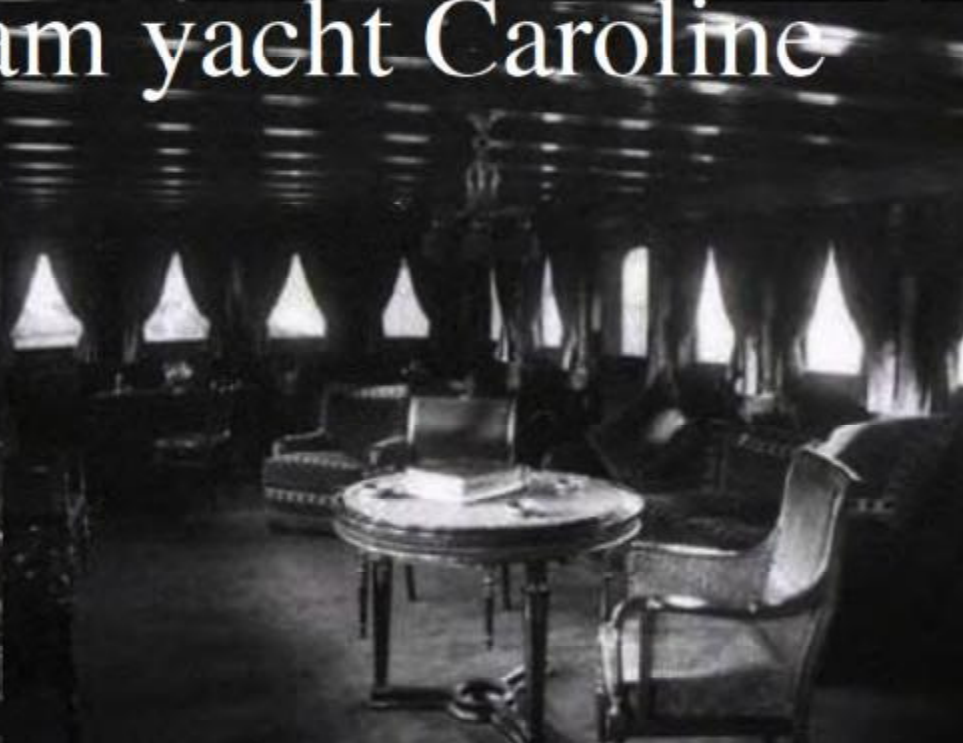


Down Below on the yacht Caroline





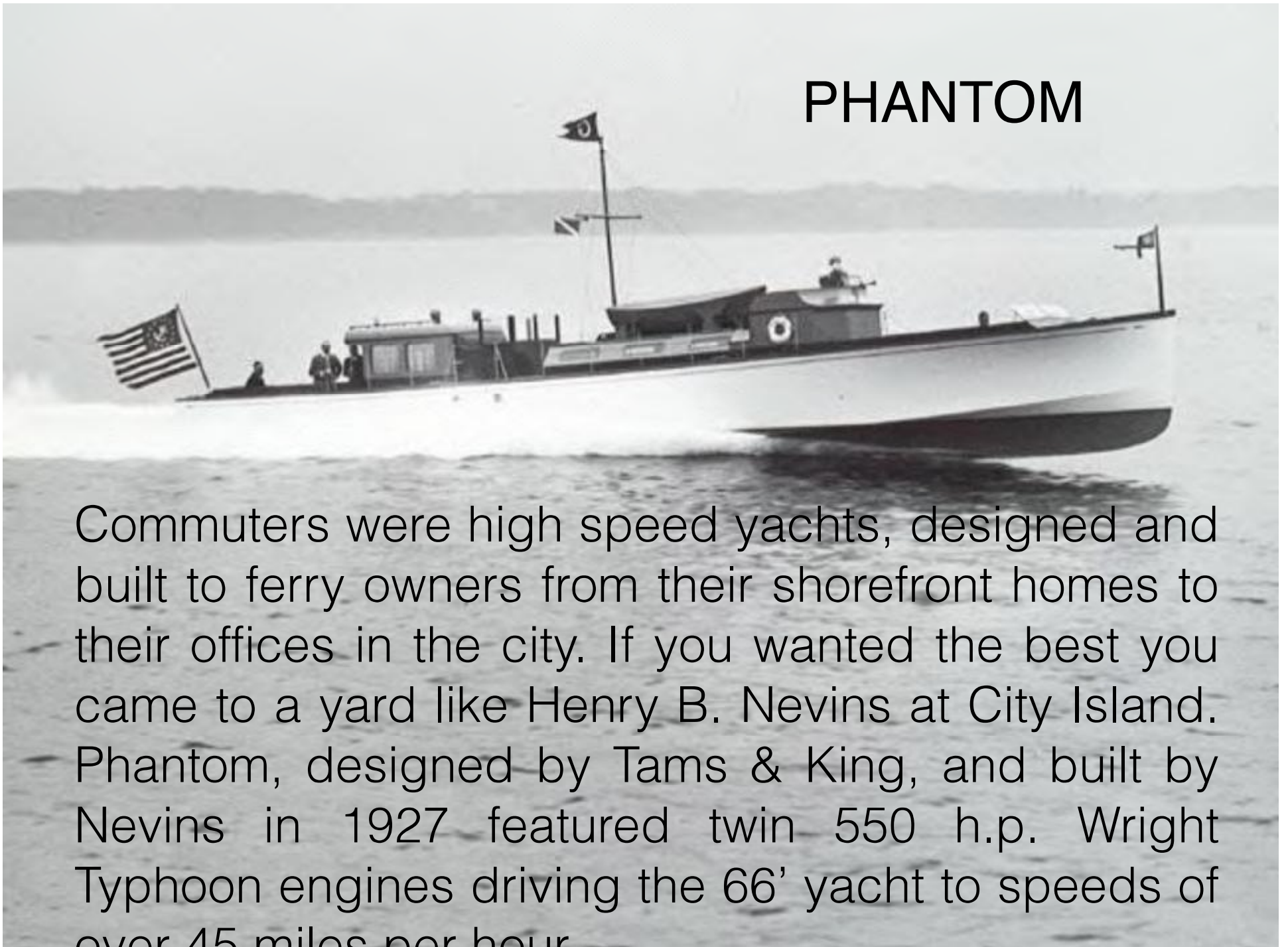
On board the steam yacht Caroline



Launching of the 157' ARAMIS at the Robert Jacob Shipyard, City Island. Aramis, owned by Arthur Marks, Vice President of B.F. Goodrich, was at that time the largest diesel yacht built anywhere.

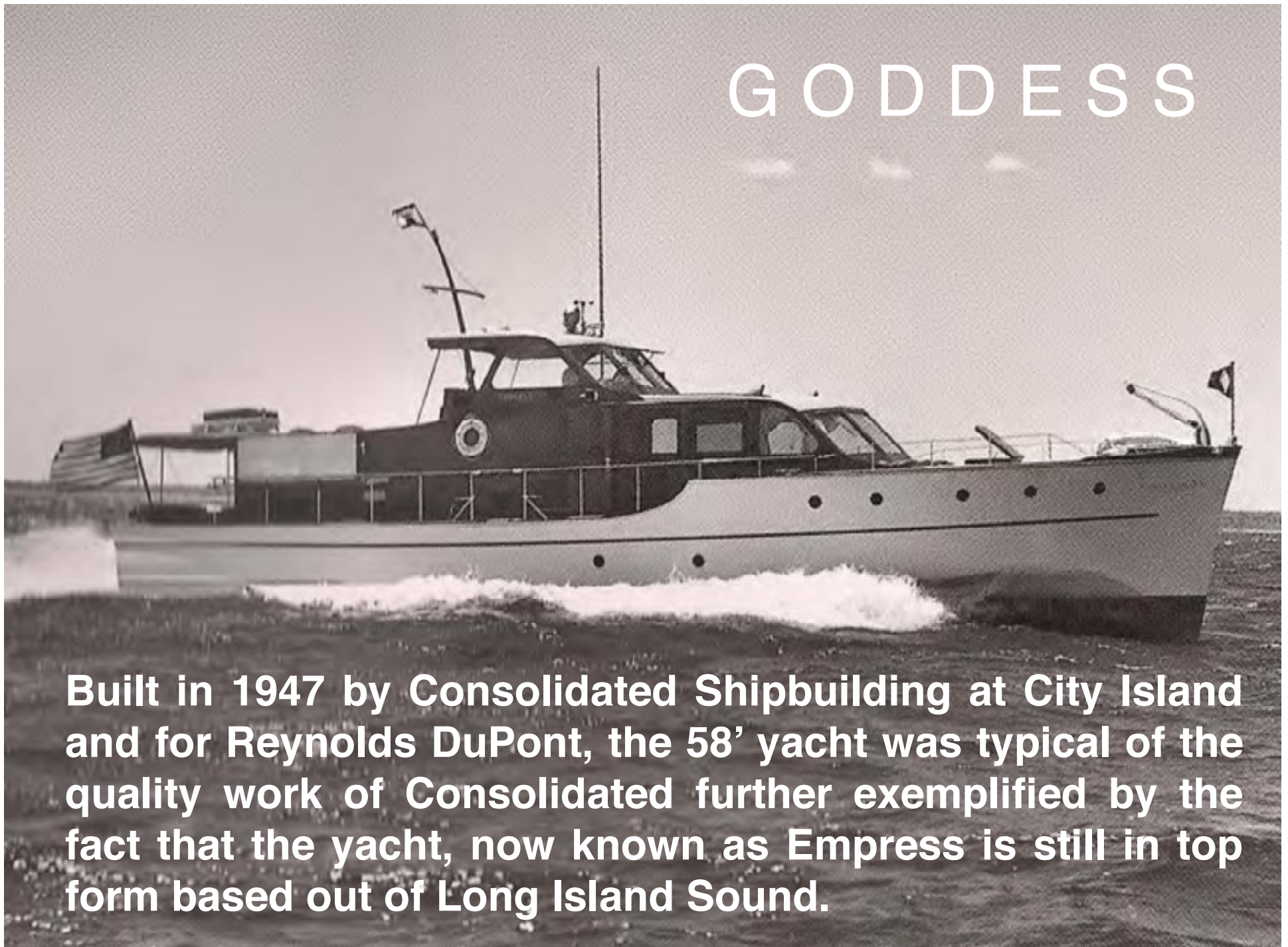


PHANTOM



Commuters were high speed yachts, designed and built to ferry owners from their shorefront homes to their offices in the city. If you wanted the best you came to a yard like Henry B. Nevins at City Island. Phantom, designed by Tams & King, and built by Nevins in 1927 featured twin 550 h.p. Wright Typhoon engines driving the 66' yacht to speeds of over 45 miles per hour.

GODDESS



Built in 1947 by Consolidated Shipbuilding at City Island and for Reynolds DuPont, the 58' yacht was typical of the quality work of Consolidated further exemplified by the fact that the yacht, now known as Empress is still in top form based out of Long Island Sound.

FEISEEN

Designed by William Gardner *Built by* B.F. Wood, 1893

Mahogany planked using over 30,000 wood rivets, yacht builder B.F. Wood declared that Feiseen was as strong as if built of steel. Driven by a steam engine designed by Charles Mosher, Feiseen set a new World Speed Record in 1893 of 31.6 mph.



N O U R M A H A L



Designed by Cox & Stevens

Built by Robert Jacob, City Island, 1921

Owner - Vincent Astor, New York

N O U R M A H A L

Steel / Diesel Yacht

Power: Twin 350 hp

Winton Diesels

L.O.A.: 160'8"

L.W.L.: 151'0"

Beam: 25'0"

Draft: 10'0"

Year Built: 1921

Designer:

Cox & Stevens

Builder:

Robert Jacob

Owner:

Vincent Astor, N.Y.

Cost to build 1921:

\$375,000.00

Included-

36' Owners launch

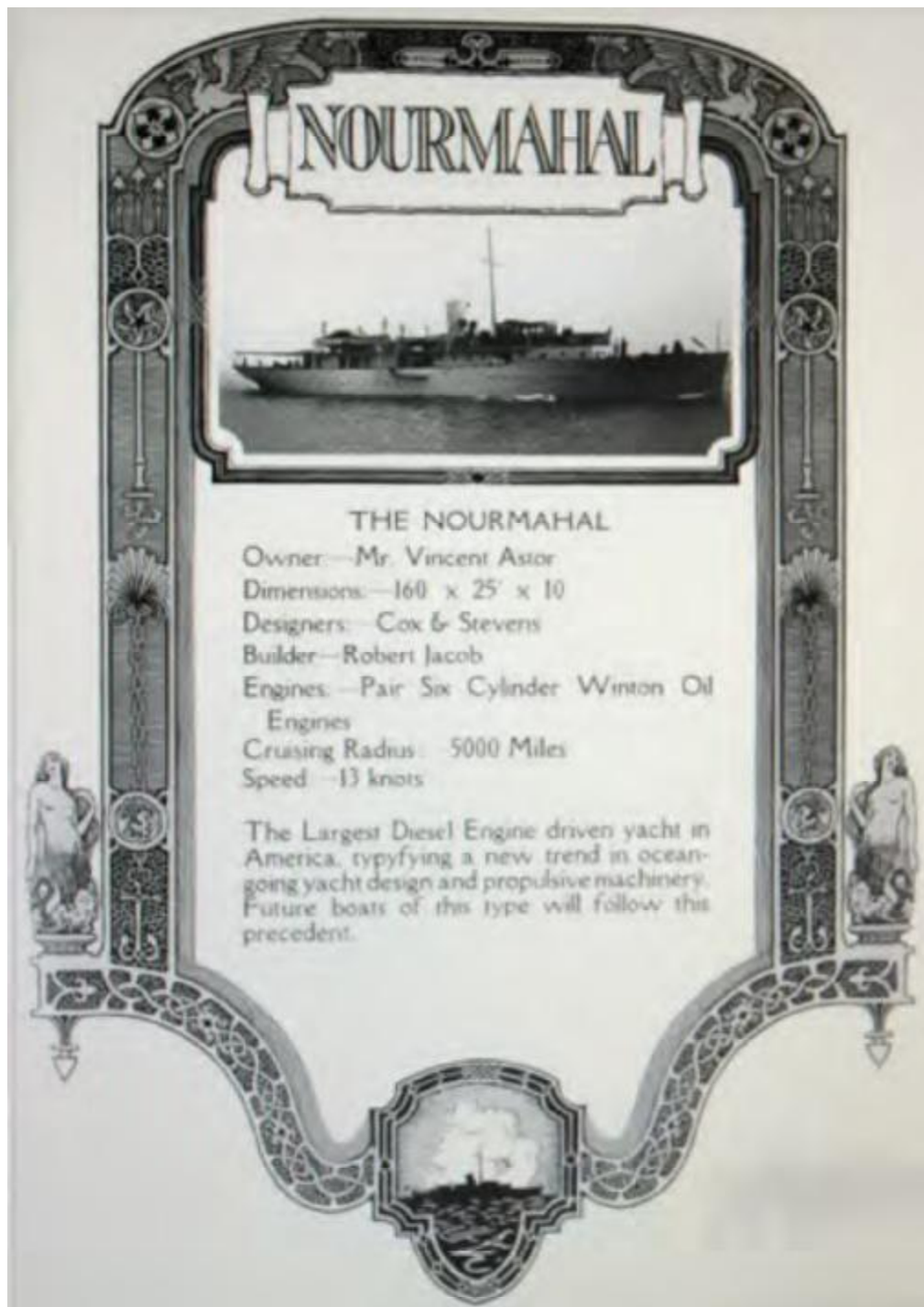
18' Crews launch

2-18' lifeboats



Launching day of the 160'8" diesel yacht
N O U R M A H A L
At the Robert Jacob Shipyard, City Island,
March, 1921





NOURMAHAL

Designed by

Cox & Stevens

Built by

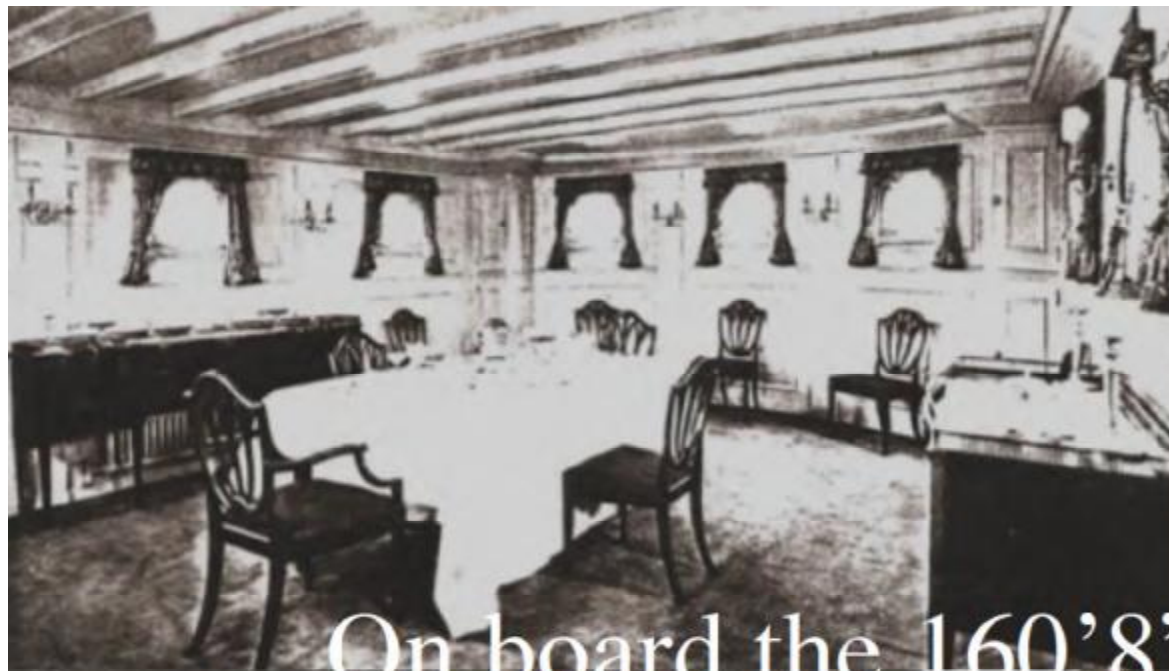
Robert Jacob,

City Island, 1921

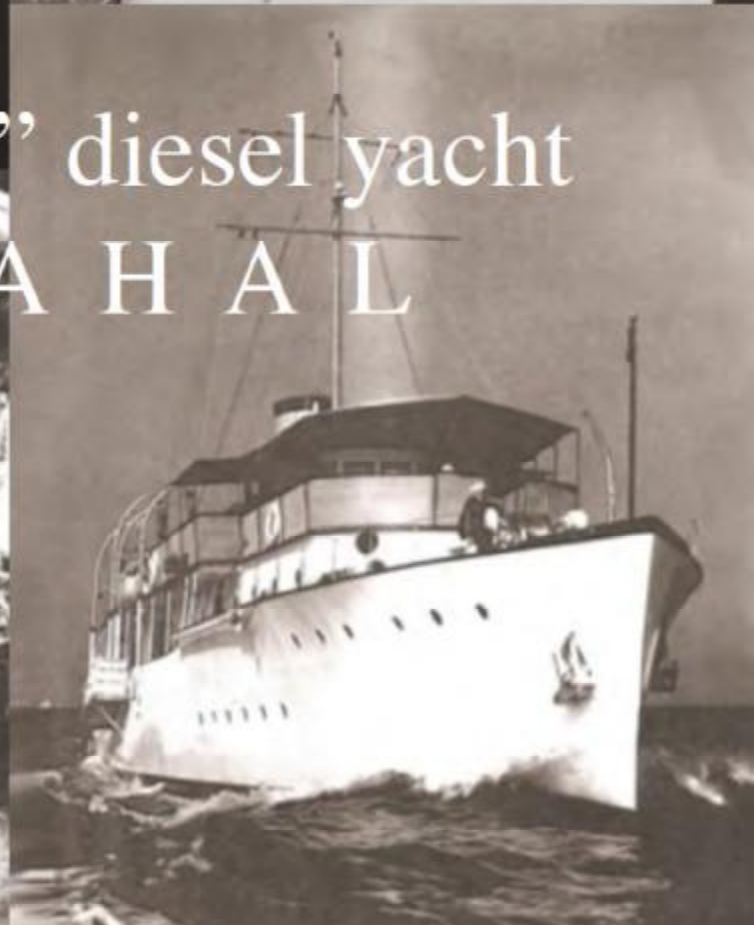
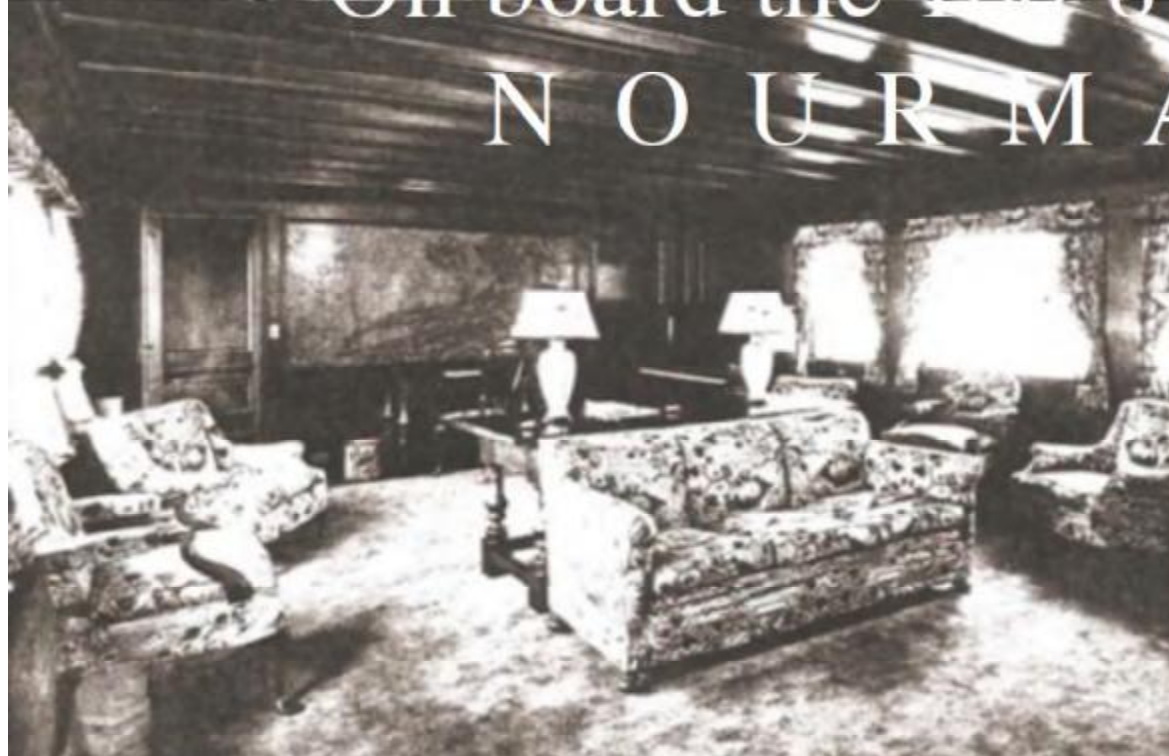
Owned by

Vincent Astor

When built Nourmahal was the largest diesel powered yacht in the world and considered the fore-runner of the modern extended offshore cruising yacht.



On board the 160'8" diesel yacht
N O U R M A H A L





EVELYN

Built by Henry Piepgras, City Island 1891

The background of the slide is a painting of a ship, the Ailsa Craig, sailing on a dark, choppy sea under a dramatic, cloudy sky. The ship is a white-hulled vessel with a red stripe along the gunwale. It has a single mast with a yellow flag at the top and a small cabin. Several crew members are visible on the deck. The ship is leaning slightly to the left, and the water is dark with white foam from the waves. The sky is a mix of blue, purple, and white, suggesting a storm or late afternoon light. Two seagulls are flying in the sky.

AILS A CRAIG

Designed by

A. Carey Smith

Built by

City Island Shipbuilding, 1907

ASOR II

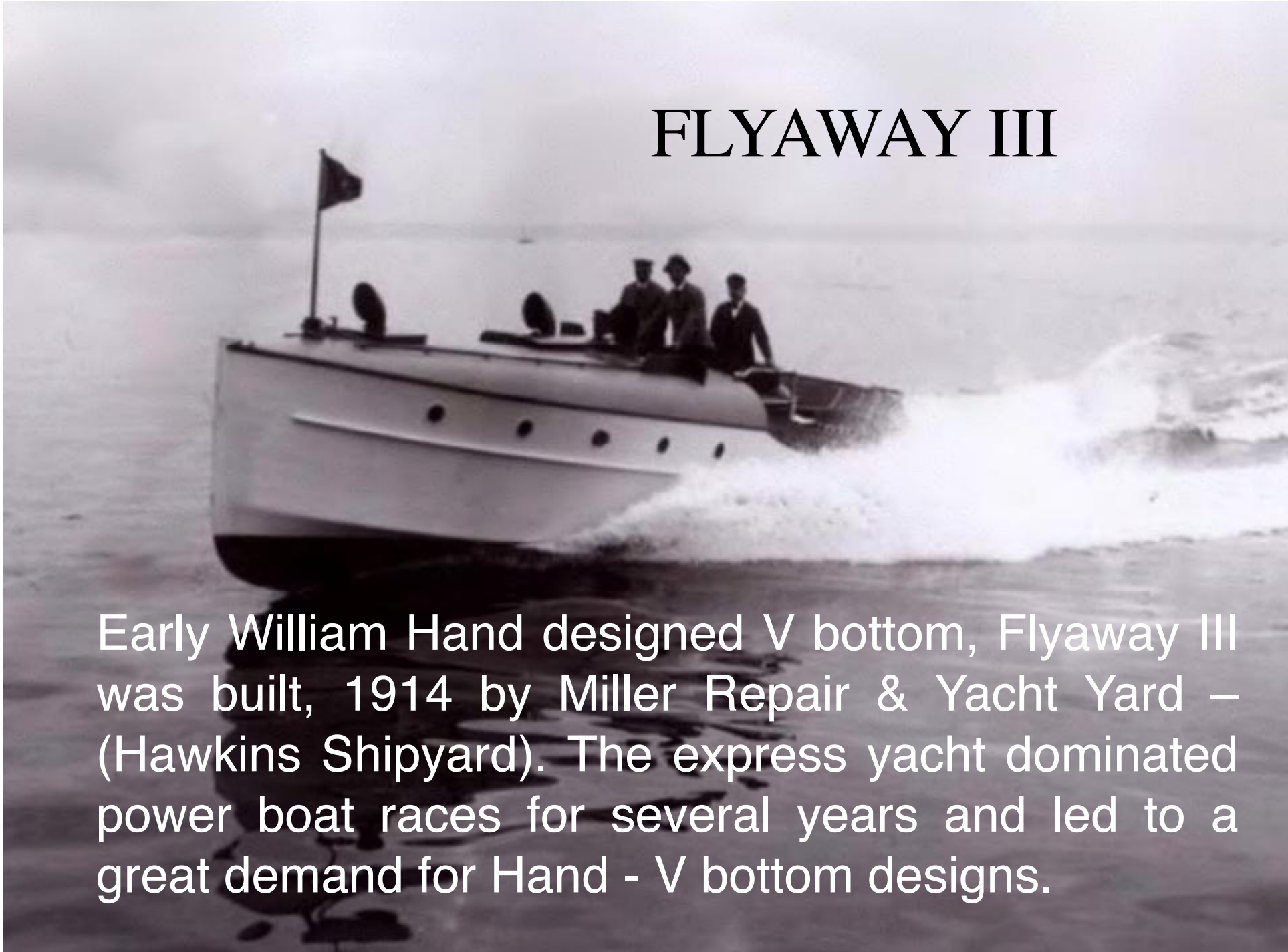


Designed by William Gardner

Built by B.F. Wood, City Island, 1908

*When launched the 120' Asor II was the largest
gas powered yacht yet built.*

FLYAWAY III

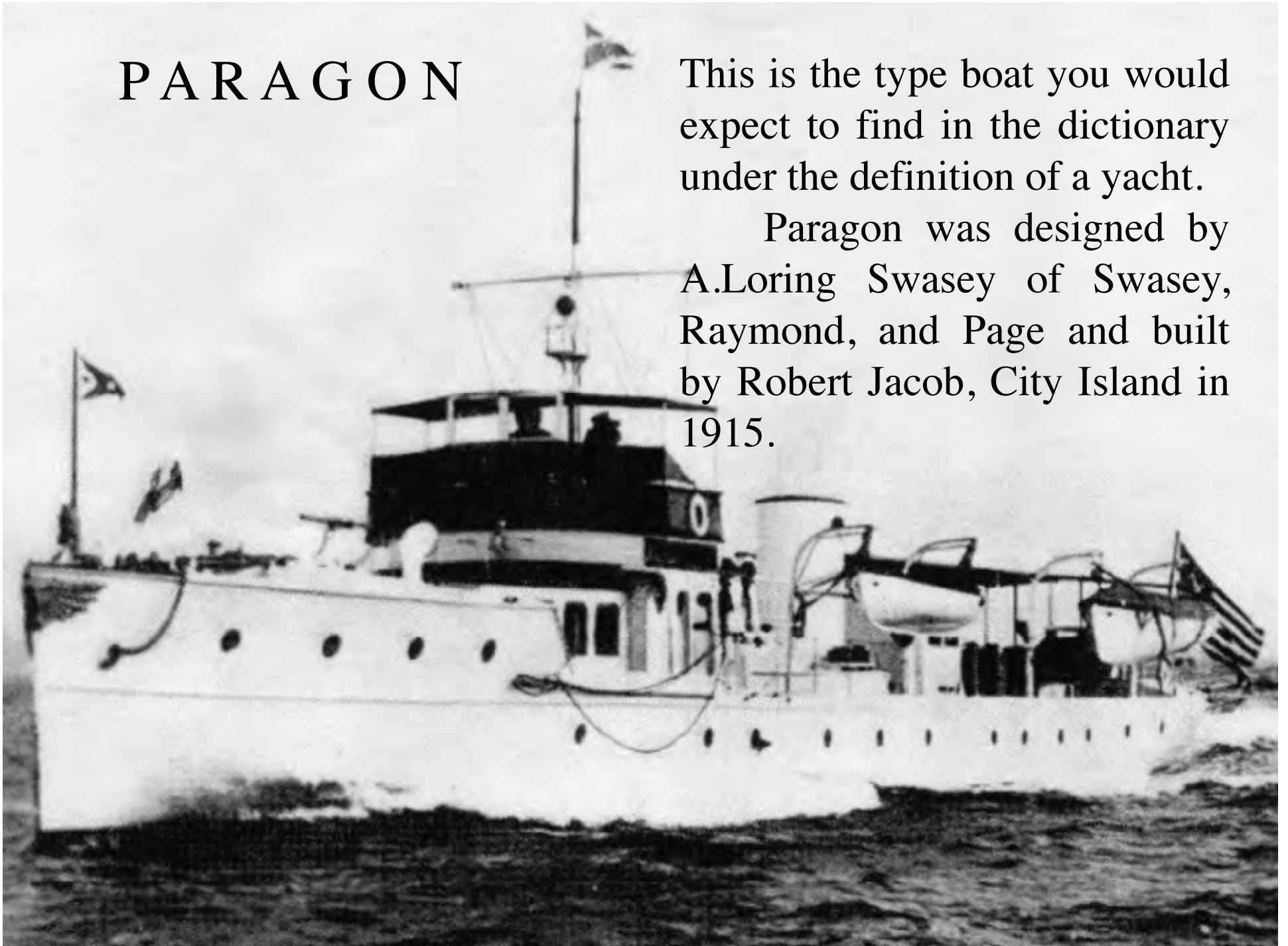


Early William Hand designed V bottom, Flyaway III was built, 1914 by Miller Repair & Yacht Yard – (Hawkins Shipyard). The express yacht dominated power boat races for several years and led to a great demand for Hand - V bottom designs.

PARAGON

This is the type boat you would expect to find in the dictionary under the definition of a yacht.

Paragon was designed by A.Loring Swasey of Swasey, Raymond, and Page and built by Robert Jacob, City Island in 1915.



P A R A G O N



Designed by Swasey, Loring, & Page
Built by Robert Jacob, City Island, 1915



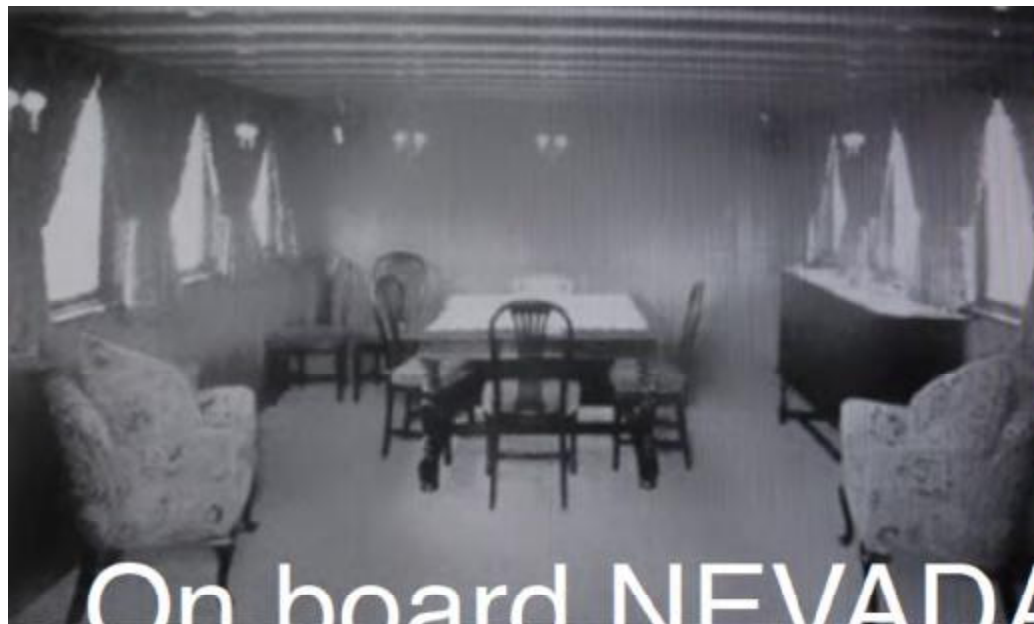
P A R A G O N

BUILT BY ROBERT JACOB, CITY ISLAND, 1915

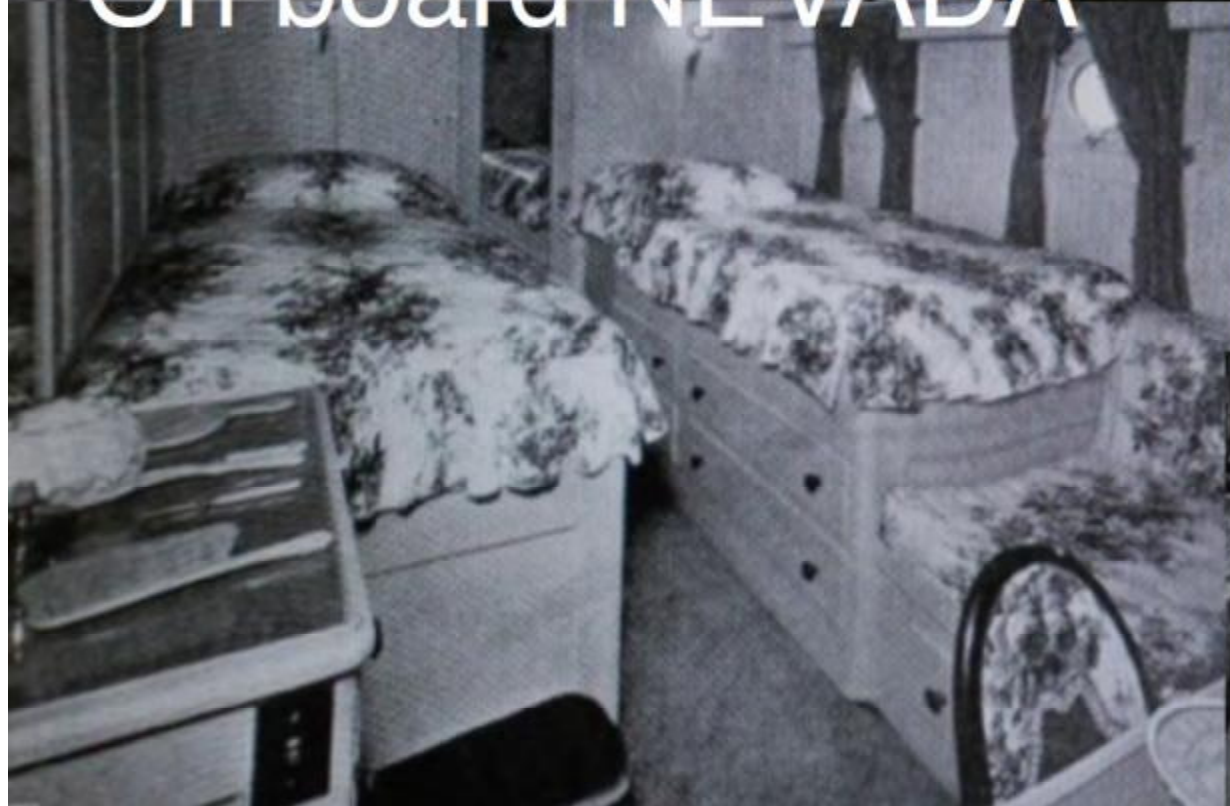


Launching day of the 110' yacht NEVADA
At the Henry B. Nevins Yacht Yard, 1926.

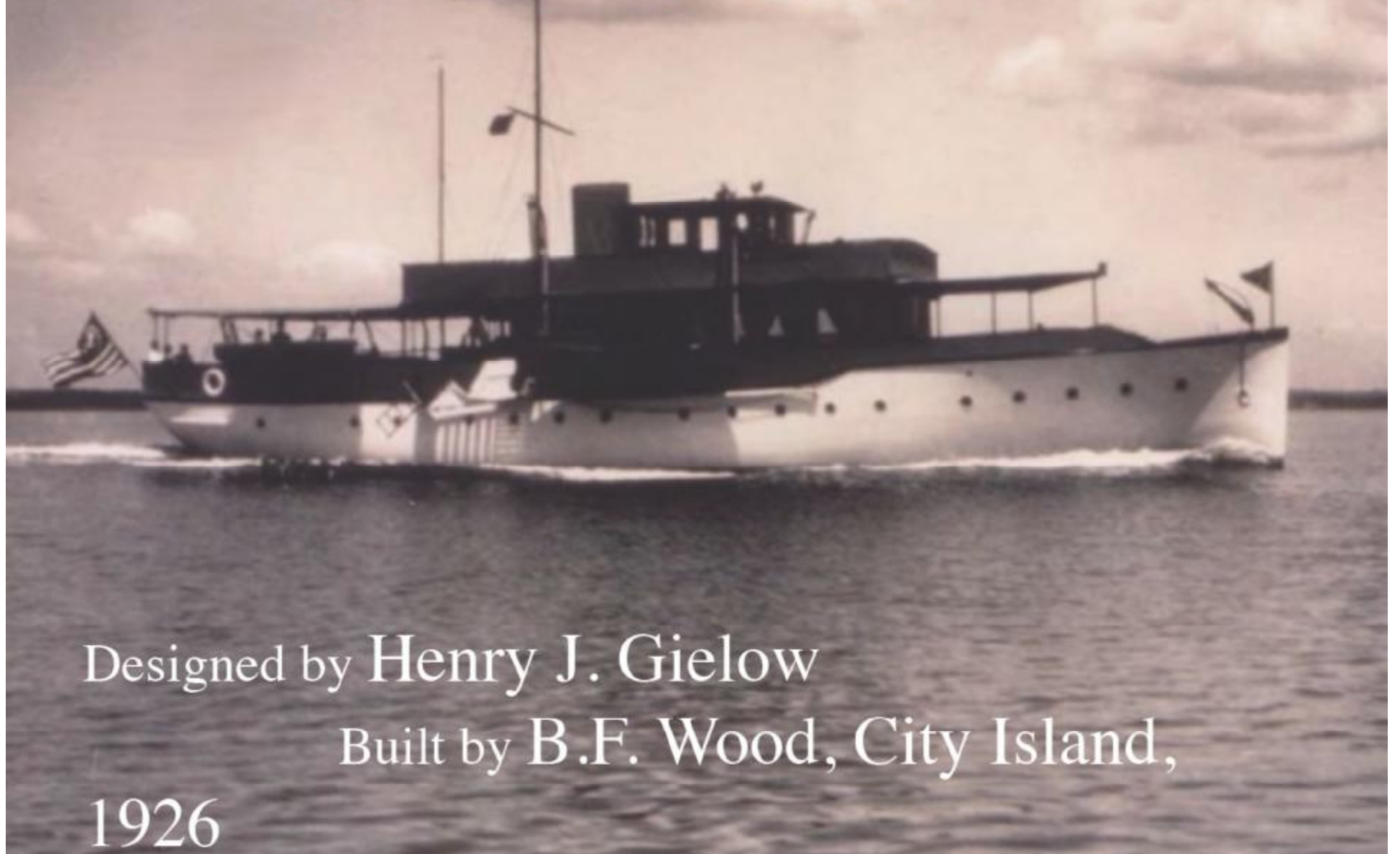




On board NEVADA



CORONET

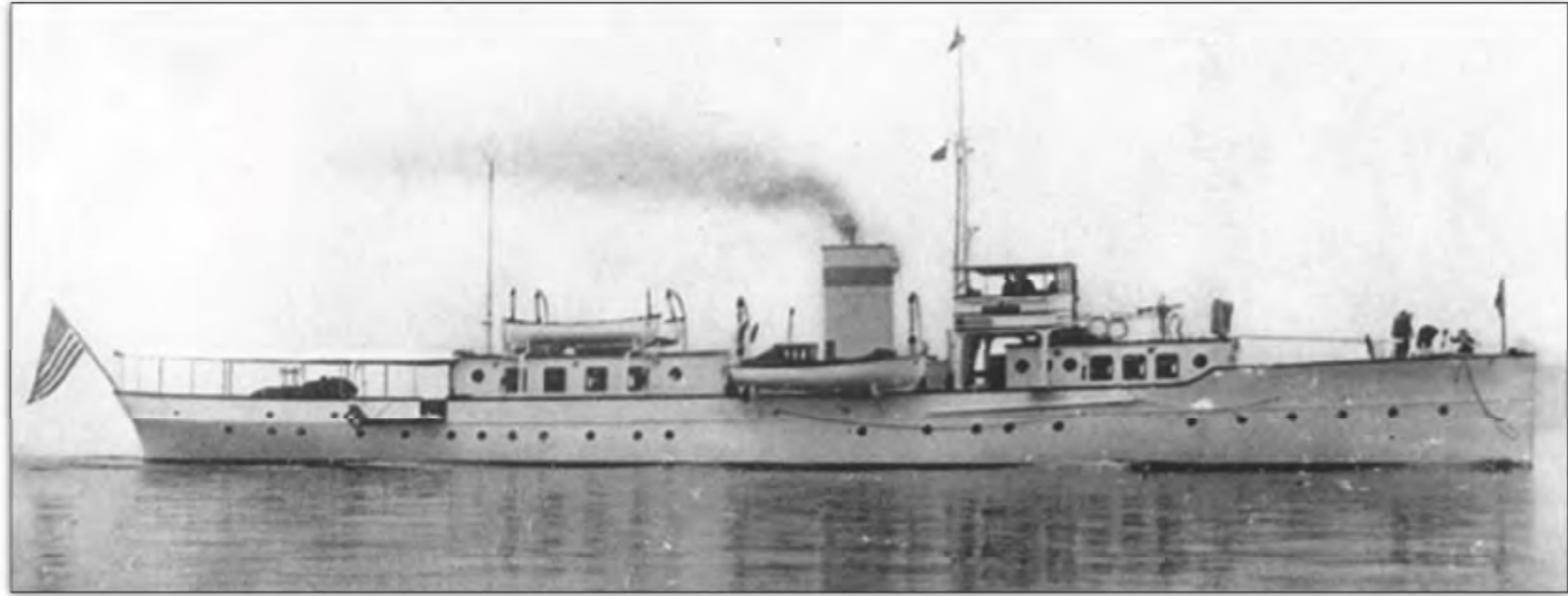


Designed by Henry J. Gielow

Built by B.F. Wood, City Island,

1926

A R A M I S



Designed by Swasey, Raymond, & Page
Built by Robert Jacob, City Island, 1916



SEA HORNET

Built in 1920 by Kyle & Purdy as a Torpedo Boat later sold and became notorious rum-runner during 1920's.



ELMARLU

Designed by Swasey, Raymond, &
Page

The 80' Elmarlu was one of the first
Large yachts built by Henry B.

WILDA III



Alden designed, the 73' yacht was the last yacht built by the Nevins Yard, 1959.

HOPESTILL



CELERITAS



SINCO



MONON



GADFLY



NAUTILUS



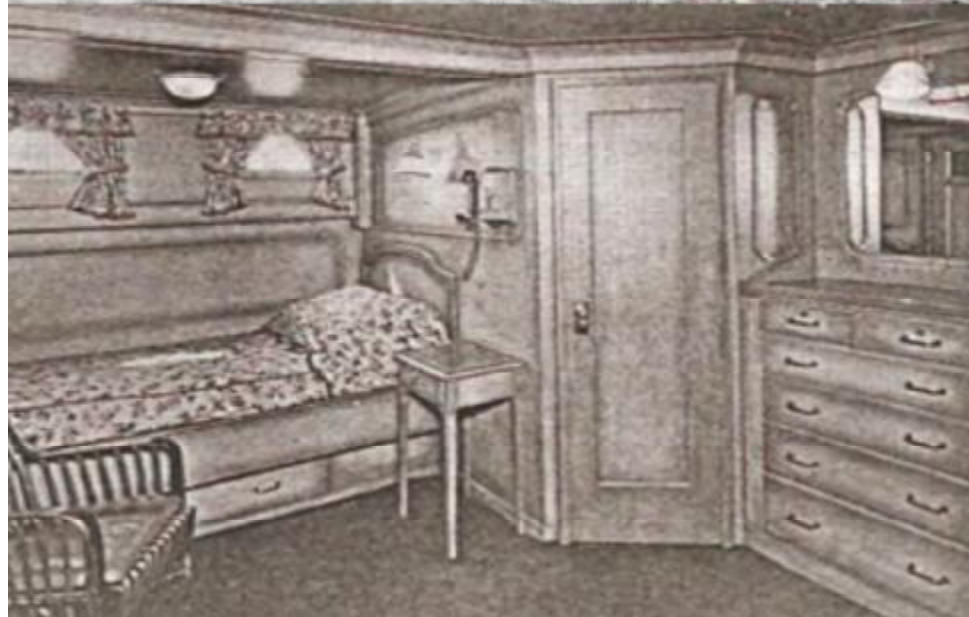


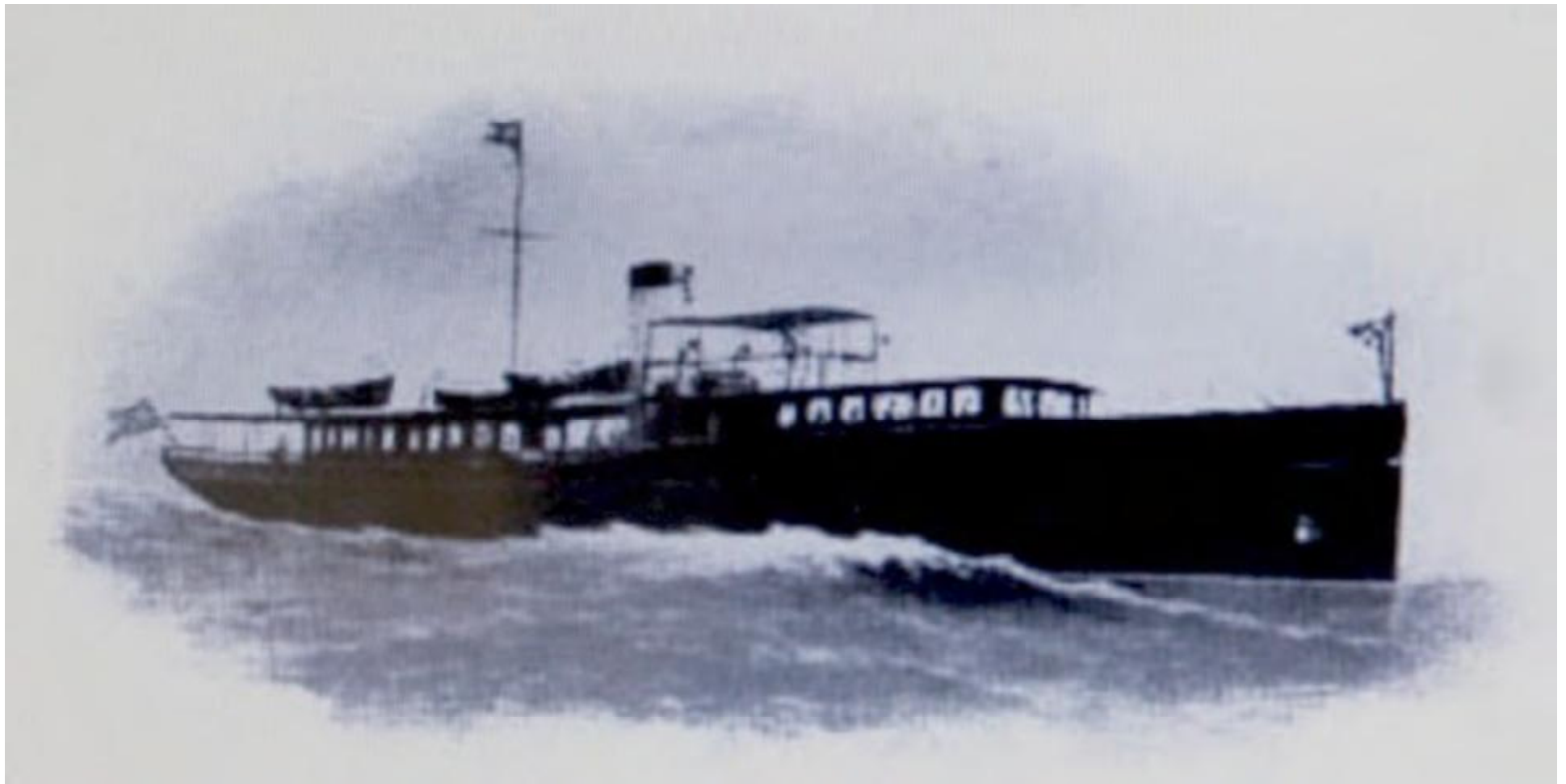
SEMLOH

State of the art 93' custom yacht built for Jay Holmes of Port Washington by Henry B. Nevins, City Island in 1936.

COLMENA

Designed by John H. Wells
Built by Robert Jacob,
City Island, 1929





HAIDA

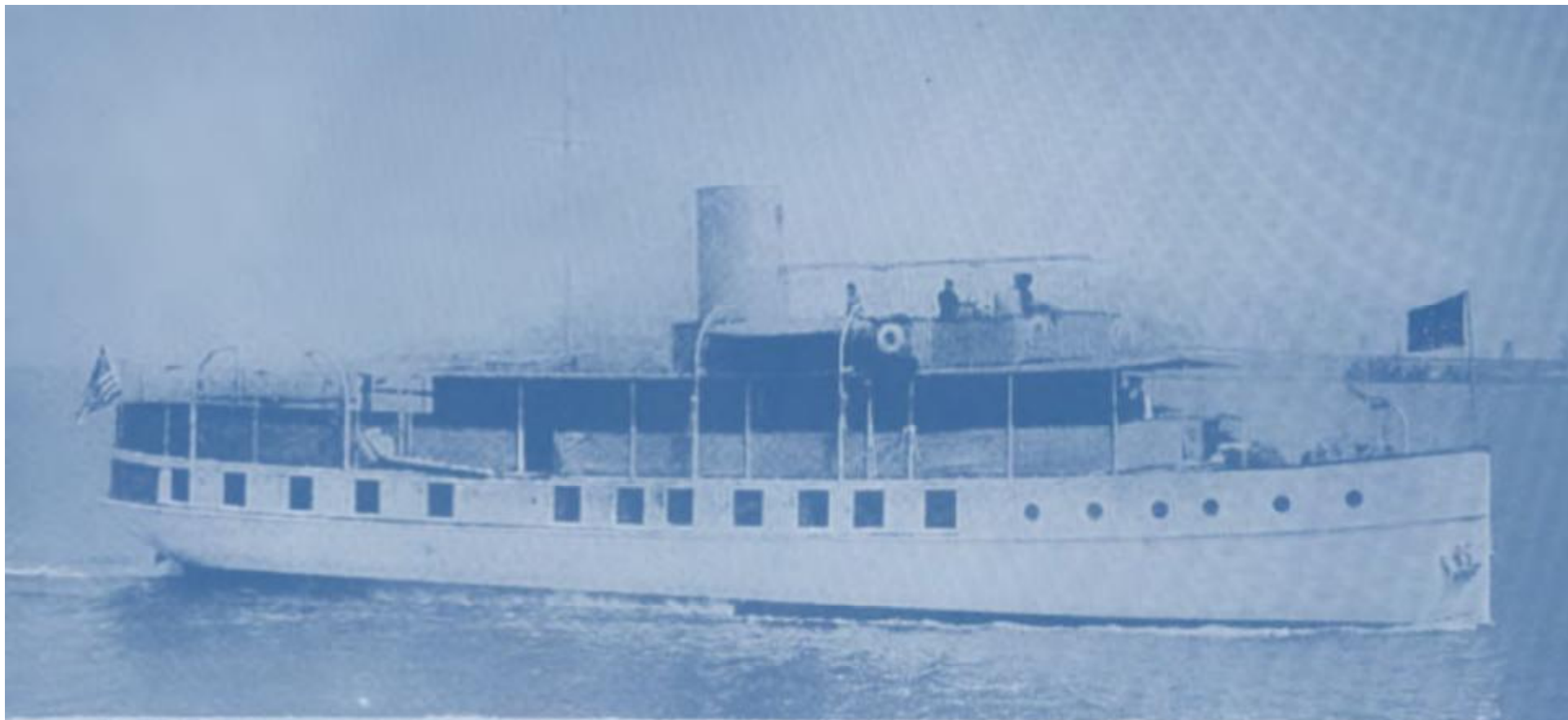
144' steel Yacht

Designed by Henry J. Gielow Built by Kyle & Purdy, City Island, 1920



ELMASADA

Designed by Whittelsey & Whittelsey Built by Kyle &
Purdy, 1912



GADFLY

Designed by Henry J. Gielow Built by Kyle & Purdy, 1917

M A R G U E R I T E

Complete remodel and rebuild from wrecked steamer

by JOHN P. HAWKINS, City Island, 1889





38 Foot "STANDARDETTE" \$6750

THE ideal craft for your cruise to Florida. Big enough for living aboard all winter and cruising about as you please. Sleeps six, with all the comforts of a houseboat.

The largest and finest boat that can be produced for the money because it is thoroughly standardized in design, construction and equipment.

Speed 11 miles with Kermath 35

Electric starting and lighting. Completely equipped and ready for extended cruising.

Come up to our plant and inspect the Standardette. Write for specifications

T. A. KYLE CO., INC.

East on Fordham St., City Island, New York
Telephone: City Island 1418

Excellent Location for Winter Storage

Introduced by the
Kyle & Purdy Yard in
the early 1920's
and built by the
T.A. Kyle Yard from the
late 1920's on, the 38'
Standardette, was a
popular model selling
through the 1930's.

HAIDA



Built as the Haida in 1941 by Robert Jacob, the yacht was taken over by the U.S. Navy before launching and commissioned as patrol yacht MENTOR PYc37





H A I D A

Designed by Henry J. Gielow

Built by Kyle & Purdy, City Island, 1920



**THE CITY ISLAND
YACHT**

Estelle



Designed & Built by
CONSOLIDATED SHIPBUILDING, City Island,



An especially beautiful flush-deck cruiser built by Minniford in 1959-60. Double-planked mahogany hull and top-sides, white oak frames and superstructure. Teak trim and fiberglass decks with aluminum reinforced carlings, all fastenings are Everdur or Monel. Powered by twin V8 GM Diesels. Both water and fuel tanks are Monel, adequate for long-range offshore cruising.

In addition to a Mercedes-Benz generator there is a belt driven Onan, and 110 volt dockside current. Accommodations include three toilets, two showers, crew quarters, hot and cold water, Way-Wolff heating system, air-conditioning, dishwasher, washer-dryer, sewage disposal system, dinghy with outboard motor. Unusual headroom. (6'4") Owner wants to sell.

FRANNY BEE

Built by

MINNEFORD YACHT YARD, 1960



CAVALIER

Designed by Swasey, Raymond, & Page
Built by Robert Jacob, City Island, 1907
For Owner Charles Proctor,
American Yacht Club, Rye, New York

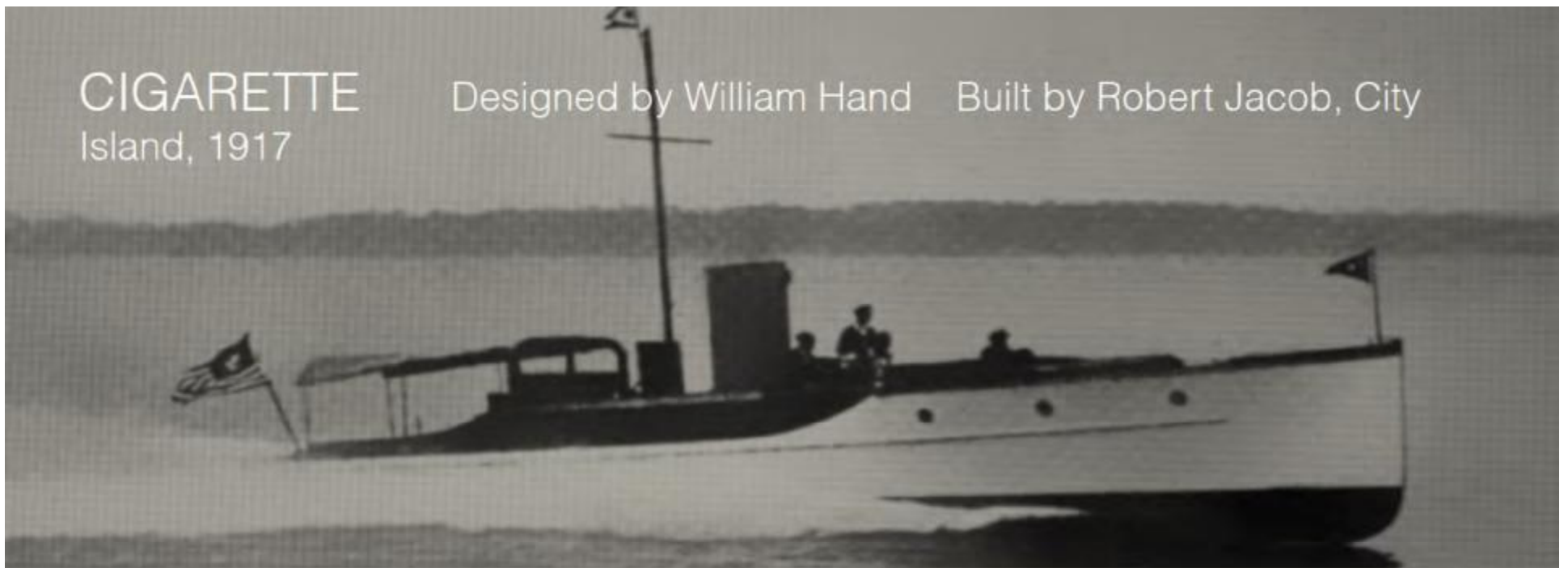


L'AIGLON

Designed by Thomas D. Bowes
Built by Robert Jacob, City Island, 1923

CIGARETTE
Island, 1917

Designed by William Hand Built by Robert Jacob, City



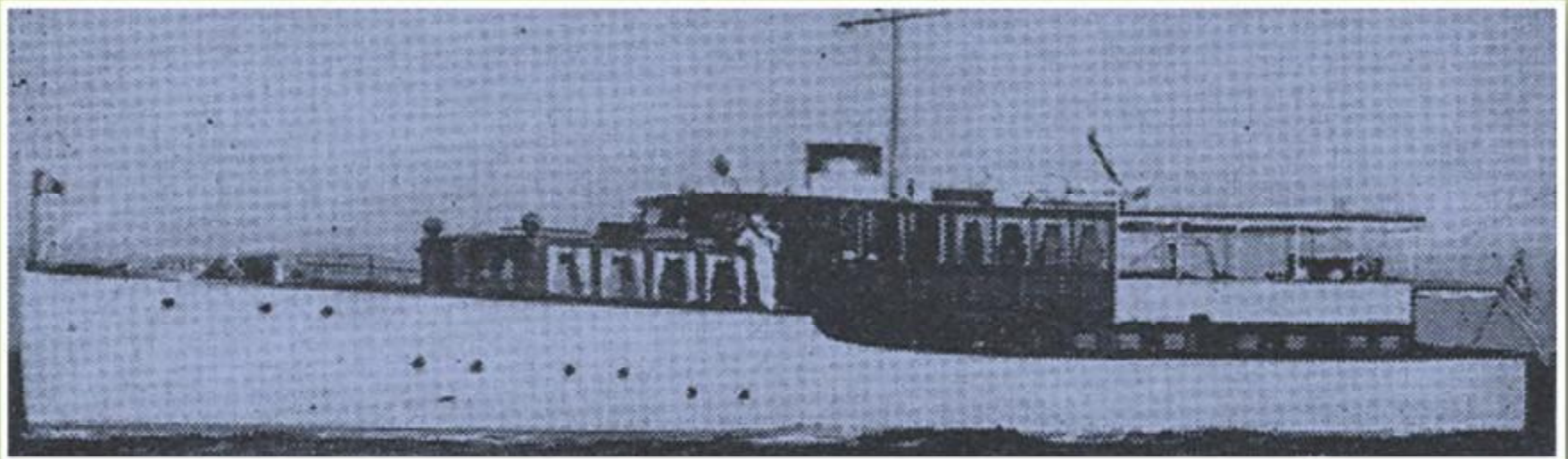
CIGARETTE
Island, 1927

Designed by John H. Wells Built by Henry B. Nevins, City

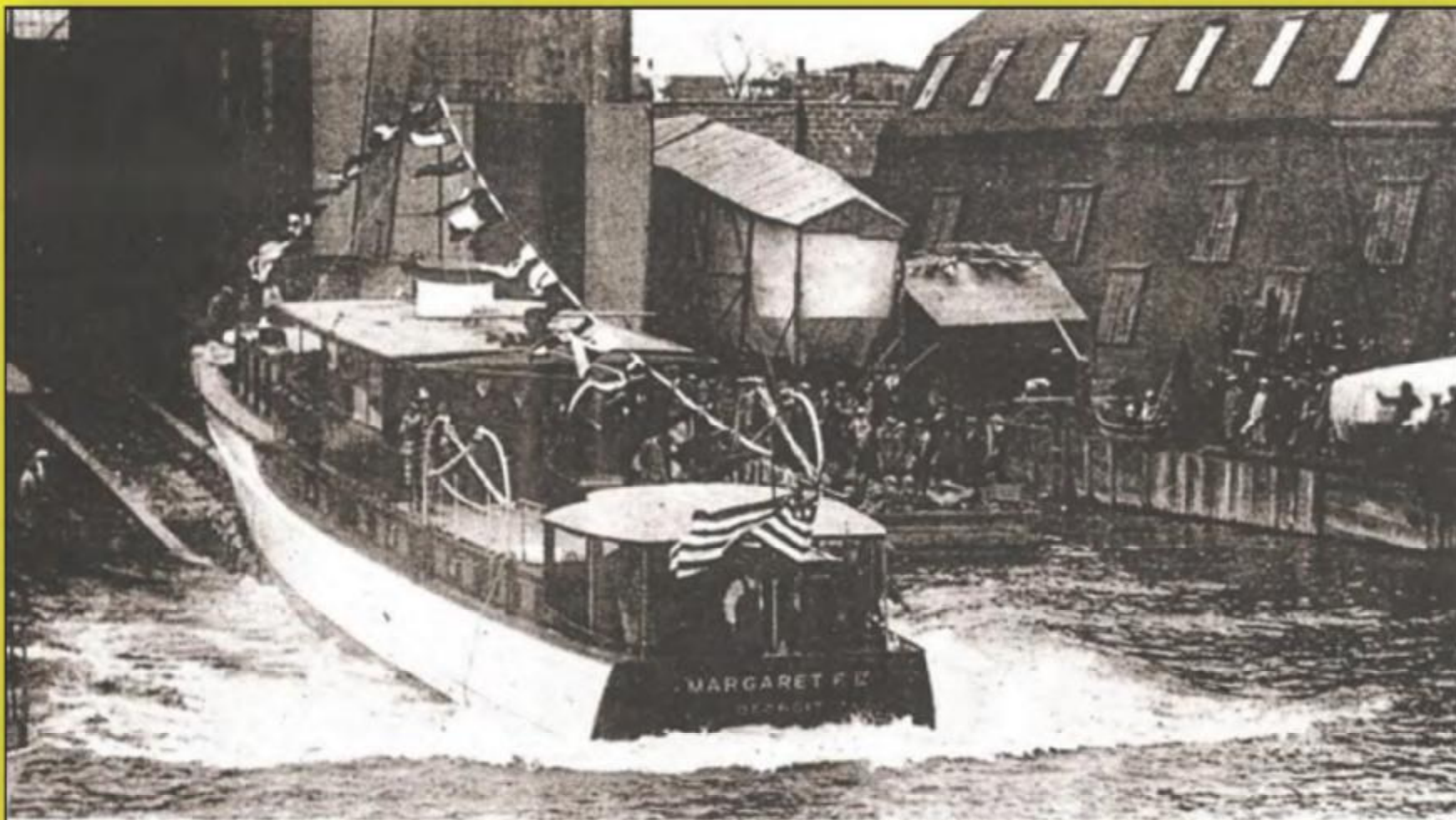


A pack of Cigarettes for L. Gordon Hamersley

LURA M



*Designed by John H. Wells
Built by Robert Jacob, City Island,
1928*



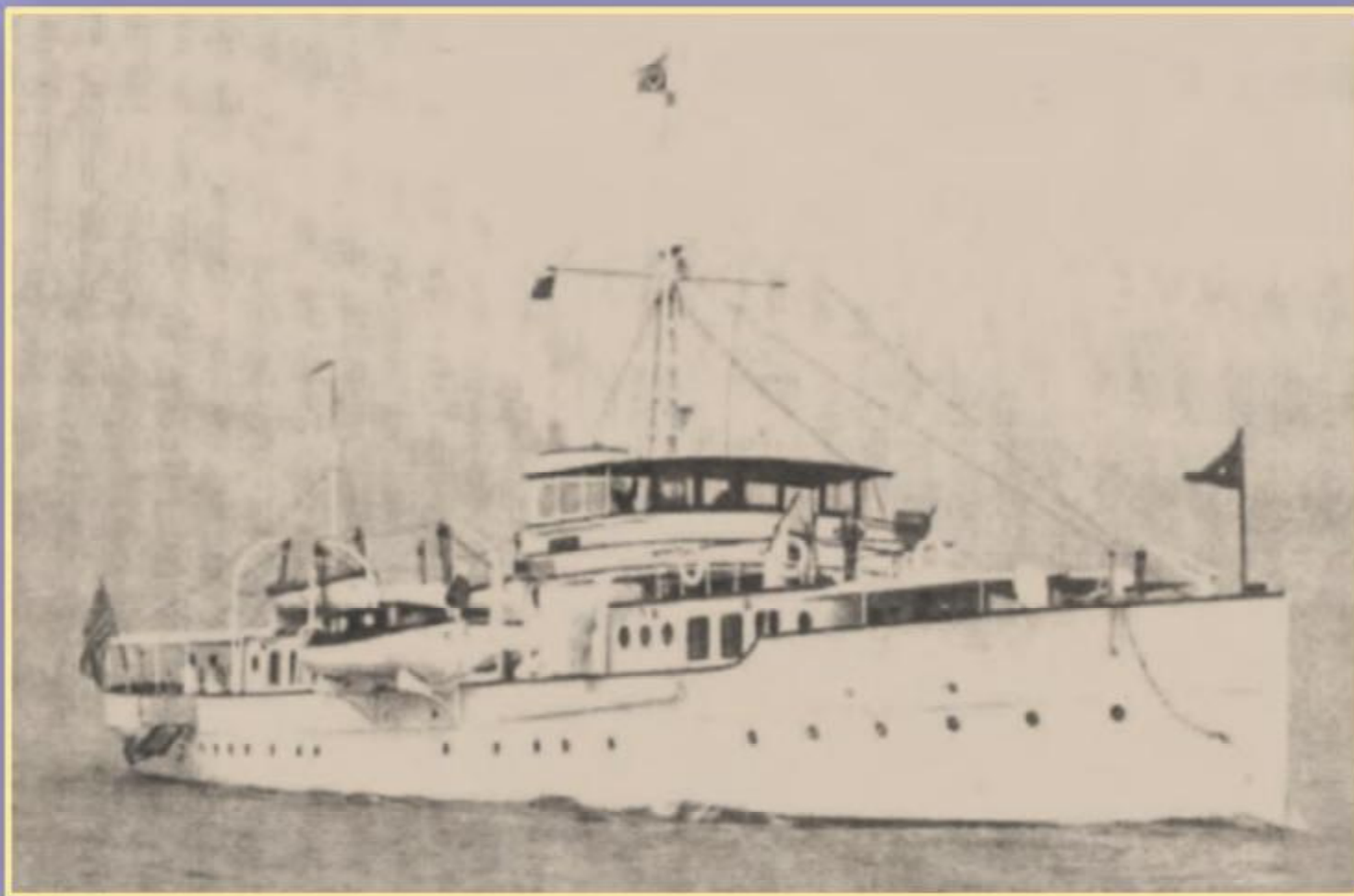
MARGARET F III

Designed by John H. Wells Built by Robert Jacob, City Island, 1928



SARAMAR

Designed by MacConnell & Cook
Built by Archibald Robertson, City Island,
1906



ARAMIS

Designed by Swasey, Raymond, & Page

Built by Robert Jacob, City Island, 1916



GET THERE

Designed by Tams, Lemoine, & Crane Built by Wood & McClure,
City Island, 1916

Originally owned by Jules Bache, later owned by Edsel Ford who had
twin Liberty 450 hp 12 cylinder engines installed propelling the 58'
yacht to a cruising speed of over 30 knots.